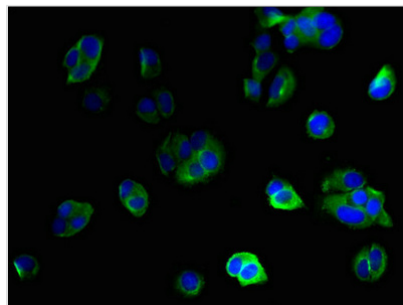




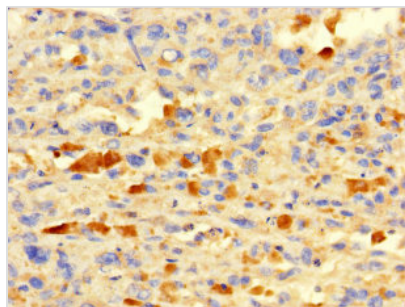
IFI27L2 Antibody

Product Code	CSB-PA884454LA01HU
Storage	Upon receipt, store at -20°C or -80°C. Avoid repeated freeze.
Uniprot No.	Q9H2X8
Immunogen	Recombinant Human Interferon alpha-inducible protein 27-like protein 2 protein (87-130AA)
Raised In	Rabbit
Species Reactivity	Human
Tested Applications	ELISA, IHC, IF; Recommended dilution: IHC:1:20-1:200, IF:1:50-1:200
Form	Liquid
Conjugate	Non-conjugated
Storage Buffer	Preservative: 0.03% Proclin 300 Constituents: 50% Glycerol, 0.01M PBS, PH 7.4
Purification Method	>95%, Protein G purified
Isotype	IgG
Clonality	Polyclonal
Alias	Interferon alpha-inducible protein 27-like protein 2 (Interferon-stimulated gene 12b protein) (ISG12(b)) (Protein TLH29) (pIFI27-like protein), IFI27L2, FAM14A TLH29
Immunogen Species	Homo sapiens (Human)
Research Area	Cell Biology
Target Names	IFI27L2

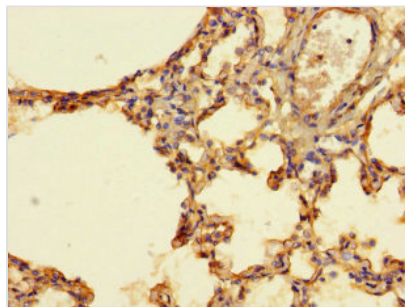
Image



Immunofluorescent analysis of MCF-7 cells using CSB-PA884454LA01HU at dilution of 1:100 and Alexa Fluor 488-conjugated AffiniPure Goat Anti-Rabbit IgG(H+L)



Immunohistochemistry of paraffin-embedded human melanoma using CSB-PA884454LA01HU at dilution of 1:100



Immunohistochemistry of paraffin-embedded human lung tissue using CSB-PA884454LA01HU at dilution of 1:100

Usage

For Research Use Only. Not for use in diagnostic or therapeutic procedures.