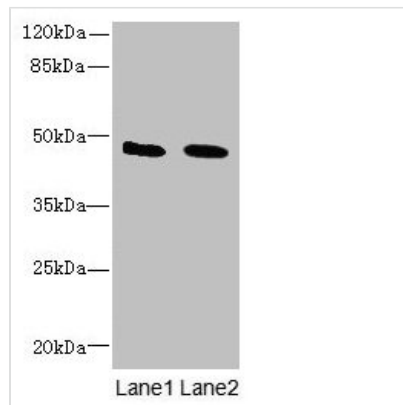




IGSF11 Antibody

Product Code	CSB-PA691547LA01HU
Storage	Upon receipt, store at -20°C or -80°C. Avoid repeated freeze.
Uniprot No.	Q5DX21
Immunogen	Recombinant Human Immunoglobulin superfamily member 11 protein (23-241AA)
Raised In	Rabbit
Species Reactivity	Human, Mouse
Tested Applications	ELISA, WB; Recommended dilution: WB:1:500-1:2000
Form	Liquid
Conjugate	Non-conjugated
Storage Buffer	Preservative: 0.03% Proclin 300 Constituents: 50% Glycerol, 0.01M PBS, PH 7.4
Purification Method	Antigen Affinity Purified
Isotype	IgG
Clonality	Polyclonal
Alias	Immunoglobulin superfamily member 11 (IgSF11) (Brain and testis-specific immunoglobulin superfamily protein) (Bt-IGSF) (V-set and immunoglobulin domain-containing protein 3), IGSF11, BTIGSF CXADRL1 VSIG3
Immunogen Species	Homo sapiens (Human)
Research Area	Immunology
Target Names	IGSF11

Image



Western blot

All lanes: IGSF11 antibody at 1.5µg/ml

Lane 1: Mouse brain tissue

Lane 2: Jurkat whole cell lysate

Secondary

Goat polyclonal to rabbit IgG at 1/10000 dilution

Predicted band size: 47, 44 kDa

Observed band size: 47 kDa

Usage

For Research Use Only. Not for use in diagnostic or therapeutic procedures.