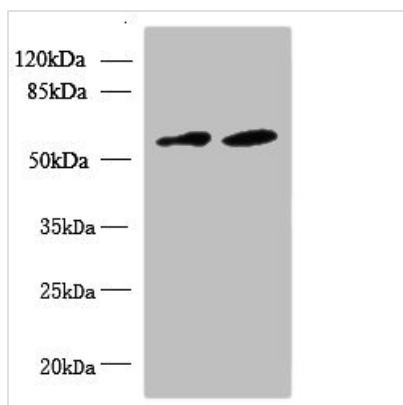




KBTBD4 Antibody

Product Code	CSB-PA882119LA01HU
Storage	Upon receipt, store at -20°C or -80°C. Avoid repeated freeze.
Uniprot No.	Q9NVX7
Immunogen	Recombinant Human Kelch repeat and BTB domain-containing protein 4 protein (151-415AA)
Raised In	Rabbit
Species Reactivity	Human, Mouse
Tested Applications	ELISA, WB, IHC; Recommended dilution: WB:1:500-1:2000, IHC:1:20-1:200
Form	Liquid
Conjugate	Non-conjugated
Storage Buffer	Preservative: 0.03% Proclin 300 Constituents: 50% Glycerol, 0.01M PBS, PH 7.4
Purification Method	>95%, Protein G purified
Isotype	IgG
Clonality	Polyclonal
Alias	Kelch repeat and BTB domain-containing protein 4 (BTB and kelch domain-containing protein 4), KBTBD4, BKLHD4
Immunogen Species	Homo sapiens (Human)
Research Area	Cell Biology
Target Names	KBTBD4

Image



Western blot

All lanes: KBTBD4 antibody at 10µg/ml

Lane 1: U87 whole cell lysate

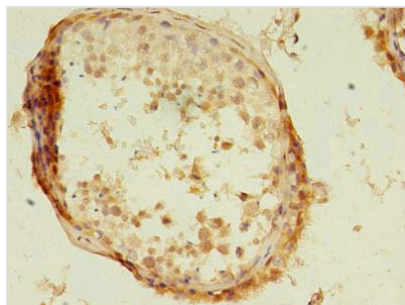
Lane 2: NIH/3T3 whole cell lysate

Secondary

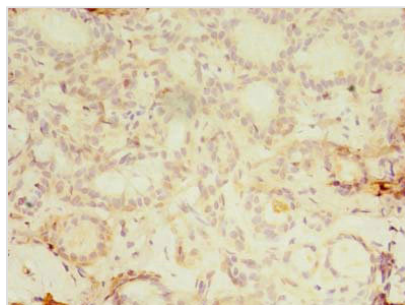
Goat polyclonal to rabbit IgG at 1/10000 dilution

Predicted band size: 59, 60 kDa

Observed band size: 59 kDa



Immunohistochemistry of paraffin-embedded human testis tissue using CSB-PA882119LA01HU at dilution of 1:100



Immunohistochemistry of paraffin-embedded human breast cancer using CSB-PA882119LA01HU at dilution of 1:100

Usage

For Research Use Only. Not for use in diagnostic or therapeutic procedures.