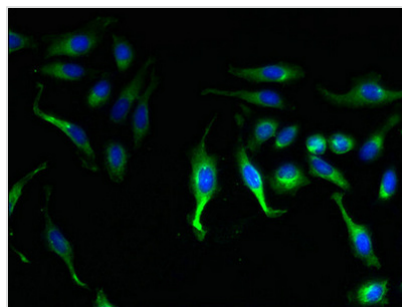




KCNMB1 Antibody

Product Code	CSB-PA621958LA01HU
Storage	Upon receipt, store at -20°C or -80°C. Avoid repeated freeze.
Uniprot No.	Q16558
Immunogen	Recombinant Human Calcium-activated potassium channel subunit beta-1 protein (40-130AA)
Raised In	Rabbit
Species Reactivity	Human
Tested Applications	ELISA, IF; Recommended dilution: IF:1:50-1:200
Form	Liquid
Conjugate	Non-conjugated
Storage Buffer	Preservative: 0.03% Proclin 300 Constituents: 50% Glycerol, 0.01M PBS, PH 7.4
Purification Method	>95%, Protein G purified
Isotype	IgG
Clonality	Polyclonal
Alias	Calcium-activated potassium channel subunit beta-1 (BK channel subunit beta-1) (BKbeta) (BKbeta1) (Hbeta1) (Calcium-activated potassium channel, subfamily M subunit beta-1) (Calcium-activated potassium channel subunit beta) (Charybdotoxin receptor subunit beta-1) (K(VCA)beta-1) (Maxi K channel subunit beta-1) (Slo-beta-1) (Slo-beta), KCNMB1
Immunogen Species	Homo sapiens (Human)
Research Area	Neuroscience
Target Names	KCNMB1

Image



Immunofluorescent analysis of HeLa cells using CSB-PA621958LA01HU at dilution of 1:100 and Alexa Fluor 488-conjugated AffiniPure Goat Anti-Rabbit IgG(H+L)

Usage For Research Use Only. Not for use in diagnostic or therapeutic procedures.