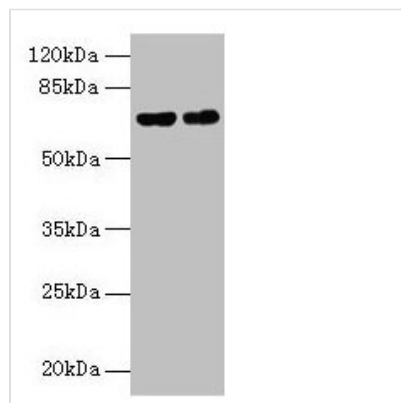




Keap1 Antibody

Product Code	CSB-PA012147LA01MO
Storage	Upon receipt, store at -20°C or -80°C. Avoid repeated freeze.
Uniprot No.	Q9Z2X8
Immunogen	Recombinant Mouse Kelch-like ECH-associated protein 1 protein (1-624AA)
Raised In	Rabbit
Species Reactivity	Mouse, Human
Tested Applications	ELISA, WB; Recommended dilution: WB:1:500-1:2000
Form	Liquid
Conjugate	Non-conjugated
Storage Buffer	Preservative: 0.03% Proclin 300 Constituents: 50% Glycerol, 0.01M PBS, PH 7.4
Purification Method	>95%, Protein G purified
Isotype	IgG
Clonality	Polyclonal
Alias	Kelch-like ECH-associated protein 1 (Cytosolic inhibitor of Nrf2) (INrf2), Keap1, Inrf2 Kiaa0132
Immunogen Species	Mus musculus (Mouse)
Research Area	Others
Target Names	Keap1

Image



Western blot

All lanes: Keap1 antibody at 9µg/ml

Lane 1: 293T whole cell lysate

Lane 2: Jurkat whole cell lysate

Secondary

Goat polyclonal to rabbit IgG at 1/10000 dilution

Predicted band size: 70 kDa

Observed band size: 70 kDa

Usage

For Research Use Only. Not for use in diagnostic or therapeutic procedures.