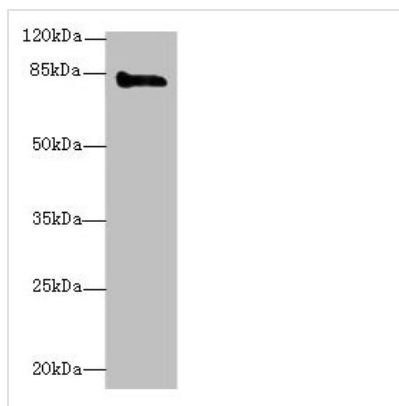




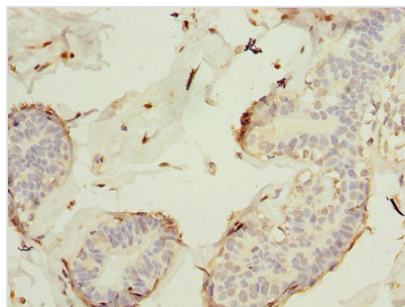
KEL Antibody

Product Code	CSB-PA012148LA01HU
Storage	Upon receipt, store at -20°C or -80°C. Avoid repeated freeze.
Uniprot No.	P23276
Immunogen	Recombinant Human Kell blood group glycoprotein protein (201-500AA)
Raised In	Rabbit
Species Reactivity	Human
Tested Applications	ELISA, WB, IHC; Recommended dilution: WB:1:500-1:2000, IHC:1:20-1:200
Form	Liquid
Conjugate	Non-conjugated
Storage Buffer	Preservative: 0.03% Proclin 300 Constituents: 50% Glycerol, 0.01M PBS, PH 7.4
Purification Method	Antigen Affinity Purified
Isotype	IgG
Clonality	Polyclonal
Alias	Kell blood group glycoprotein (EC 3.4.24.-) (CD antigen CD238), KEL
Immunogen Species	Homo sapiens (Human)
Research Area	Cardiovascular
Target Names	KEL

Image



Western blot
 All lanes: KEL antibody at 3µg/ml + HepG2 whole cell lysate
 Secondary
 Goat polyclonal to rabbit IgG at 1/10000 dilution
 Predicted band size: 83 kDa
 Observed band size: 83 kDa



Immunohistochemistry of paraffin-embedded human breast cancer using CSB-PA012148LA01HU at dilution of 1:100

Usage

For Research Use Only. Not for use in diagnostic or therapeutic procedures.