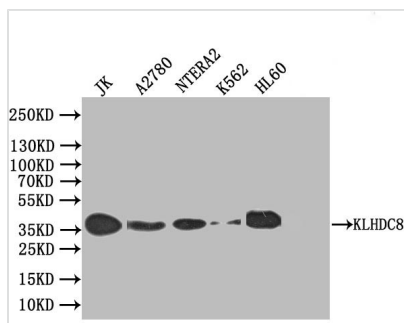




KLHDC8A Antibody

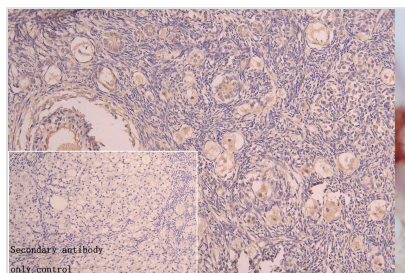
Product Code	CSB-PA816911LA01HU
Storage	Upon receipt, store at -20°C or -80°C. Avoid repeated freeze.
Uniprot No.	Q8IYD2
Immunogen	Recombinant Human Kelch domain-containing protein 8A protein (1-350AA)
Raised In	Rabbit
Species Reactivity	Human
Tested Applications	ELISA, WB, IHC; Recommended dilution: WB:1:500-1:2000, IHC:1:20-1:200
Form	Liquid
Conjugate	Non-conjugated
Storage Buffer	Preservative: 0.03% Proclin 300 Constituents: 50% Glycerol, 0.01M PBS, PH 7.4
Purification Method	Antigen Affinity Purified
Isotype	IgG
Clonality	Polyclonal
Product Type	Polyclonal Antibody
Immunogen Species	Homo sapiens (Human)
Research Area	Cell Biology
Target Names	KLHDC8A

Image



Western Blot

Positive WB detected in: JK whole cell lysate, A2780 whole cell lysate, ntera2 whole cell lysate, K562 whole cell lysate, HL60 whole cell lysate
All lanes: KLHDC8A antibody at 1:1000
Secondary
Goat polyclonal to rabbit IgG at 1/50000 dilution
Predicted band size: 39 kDa
Observed band size: 39 kDa



IHC image of CSB-PA816911LA01HU diluted at 1:150 and staining in paraffin-embedded human ovarian tissue performed on a Leica Bond™ system. After dewaxing and hydration, antigen retrieval was mediated by high pressure in a citrate buffer (pH 6.0). Section was blocked with 10% normal goat serum 30min at RT. Then primary antibody (1% BSA) was incubated at 4°C overnight. The primary is detected by a Goat anti-rabbit polymer IgG labeled by HRP and visualized using 0.05% DAB. Secondary antibody only control: uses 1% BSA instead of



primary antibody

Usage

For Research Use Only. Not for use in diagnostic or therapeutic procedures.