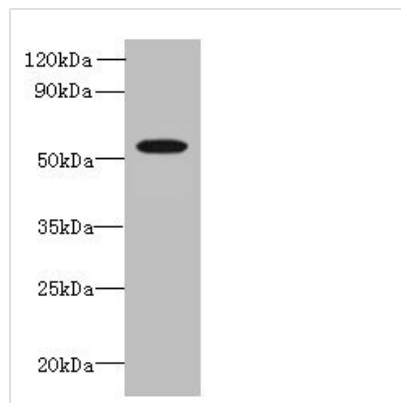




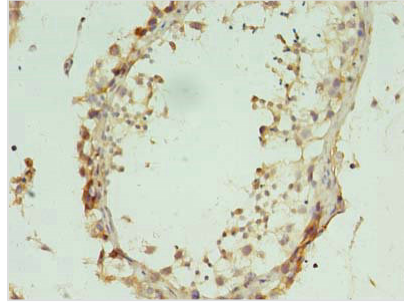
# L2HGDH Antibody

<b>Product Code</b>	CSB-PA864008LA01HU
<b>Storage</b>	Upon receipt, store at -20°C or -80°C. Avoid repeated freeze.
<b>Uniprot No.</b>	Q9H9P8
<b>Immunogen</b>	Recombinant Human L-2-hydroxyglutarate dehydrogenase, mitochondrial protein (52-463AA)
<b>Raised In</b>	Rabbit
<b>Species Reactivity</b>	Human
<b>Tested Applications</b>	ELISA, WB, IHC; Recommended dilution: WB:1:500-1:2000, IHC:1:20-1:200
<b>Form</b>	Liquid
<b>Conjugate</b>	Non-conjugated
<b>Storage Buffer</b>	Preservative: 0.03% Proclin 300 Constituents: 50% Glycerol, 0.01M PBS, PH 7.4
<b>Purification Method</b>	>95%, Protein G purified
<b>Isotype</b>	IgG
<b>Clonality</b>	Polyclonal
<b>Alias</b>	L-2-hydroxyglutarate dehydrogenase, mitochondrial (EC 1.1.99.2) (Duranin), L2HGDH, C14orf160
<b>Immunogen Species</b>	Homo sapiens (Human)
<b>Research Area</b>	Signal Transduction
<b>Target Names</b>	L2HGDH

## Image



Western blot  
 All lanes: L2HGDH antibody at 8µg/ml + K562 whole cell lysate  
 Secondary  
 Goat polyclonal to rabbit IgG at 1/10000 dilution  
 Predicted band size: 51, 49 kDa  
 Observed band size: 51 kDa



Immunohistochemistry of paraffin-embedded human testis tissue using CSB-PA864008LA01HU at dilution of 1:100

---

**Usage**

For Research Use Only. Not for use in diagnostic or therapeutic procedures.