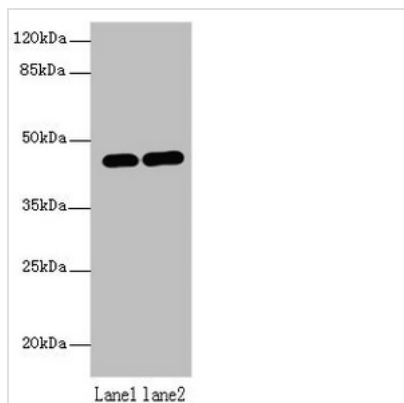




# LMNTD1 Antibody

|                            |   |
|----------------------------|---|
| <b>Product Code</b>        | CSB-PA854083LA01HU  |
| <b>Storage</b>             | Upon receipt, store at -20°C or -80°C. Avoid repeated freeze.   |
| <b>Uniprot No.</b>         | Q8N9Z9  |
| <b>Immunogen</b>           | Recombinant Human Lamin tail domain-containing protein 1 protein (113-291AA)                                    |
| <b>Raised In</b>           | Rabbit  |
| <b>Species Reactivity</b>  | Human, Mouse  |
| <b>Tested Applications</b> | ELISA, WB; Recommended dilution: WB:1:500-1:2000  |
| <b>Form</b>                | Liquid  |
| <b>Conjugate</b>           | Non-conjugated  |
| <b>Storage Buffer</b>      | Preservative: 0.03% Proclin 300<br>Constituents: 50% Glycerol, 0.01M PBS, PH 7.4                                |
| <b>Purification Method</b> | >95%, Protein G purified  |
| <b>Isotype</b>             | IgG   |
| <b>Clonality</b>           | Polyclonal  |
| <b>Alias</b>               | Lamin tail domain-containing protein 1 (Intermediate filament tail domain-containing protein 1), LMNTD1, IFLTD1 |
| <b>Immunogen Species</b>   | Homo sapiens (Human)  |
| <b>Research Area</b>       | Cell Biology  |
| <b>Target Names</b>        | LMNTD1  |

## Image



### Western blot

All lanes: LMNTD1 antibody at 12µg/ml

Lane 1: MCF-7 whole cell lysate

Lane 2: Mouse liver tissue

Secondary

Goat polyclonal to rabbit IgG at 1/10000 dilution

Predicted band size: 44, 34, 37, 42, 46 kDa

Observed band size: 44 kDa

## Usage

For Research Use Only. Not for use in diagnostic or therapeutic procedures.