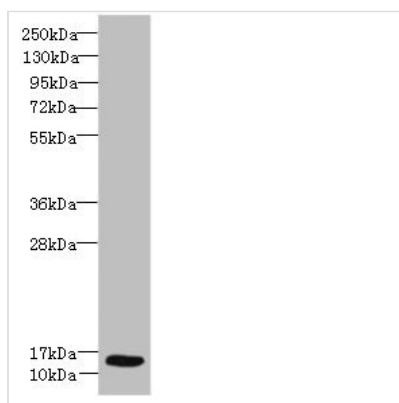




# Ly6e Antibody

<b>Product Code</b>	CSB-PA717533LA01MO
<b>Storage</b>	Upon receipt, store at -20°C or -80°C. Avoid repeated freeze.
<b>Uniprot No.</b>	Q64253
<b>Immunogen</b>	Recombinant Mouse Lymphocyte antigen 6E protein (21-102AA)
<b>Raised In</b>	Rabbit
<b>Species Reactivity</b>	Mouse, Human
<b>Tested Applications</b>	ELISA, WB; Recommended dilution: WB:1:500-1:2000
<b>Form</b>	Liquid
<b>Conjugate</b>	Non-conjugated
<b>Storage Buffer</b>	Preservative: 0.03% Proclin 300 Constituents: 50% Glycerol, 0.01M PBS, PH 7.4
<b>Purification Method</b>	>95%, Protein G purified
<b>Isotype</b>	IgG
<b>Clonality</b>	Polyclonal
<b>Alias</b>	Lymphocyte antigen 6E (Ly-6E) (Stem cell antigen 2) (Thymic shared antigen 1) (TSA-1), Ly6e, Ly67 Sca-2 Tsa-1
<b>Immunogen Species</b>	Mus musculus (Mouse)
<b>Research Area</b>	Cell Biology
<b>Target Names</b>	Ly6e

## Image



Western blot

All lanes: Ly6e antibody at 8µg/ml + HeLa whole cell lysate

Secondary

Goat polyclonal to rabbit IgG at 1/10000 dilution

Predicted band size: 14 kDa

Observed band size: 14 kDa

## Usage

For Research Use Only. Not for use in diagnostic or therapeutic procedures.