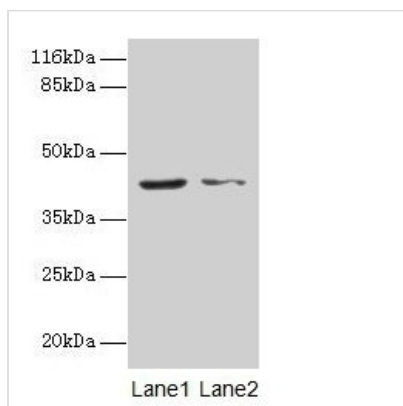




MAPK13 Antibody

Product Code	CSB-PA013452LA01HU
Storage	Upon receipt, store at -20°C or -80°C. Avoid repeated freeze.
Uniprot No.	O15264
Immunogen	Recombinant Human Mitogen-activated protein kinase 13 protein (1-365AA)
Raised In	Rabbit
Species Reactivity	Human
Tested Applications	ELISA, WB, IHC, IF; Recommended dilution: WB:1:500-1:2000, IHC:1:20-1:200, IF:1:50-1:200
Form	Liquid
Conjugate	Non-conjugated
Storage Buffer	Preservative: 0.03% Proclin 300 Constituents: 50% Glycerol, 0.01M PBS, PH 7.4
Purification Method	>95%, Protein G purified
Isotype	IgG
Clonality	Polyclonal
Alias	Mitogen-activated protein kinase 13 (MAP kinase 13) (MAPK 13) (EC 2.7.11.24) (Mitogen-activated protein kinase p38 delta) (MAP kinase p38 delta) (Stress-activated protein kinase 4), MAPK13, PRKM13 SAPK4
Immunogen Species	Homo sapiens (Human)
Research Area	Cell Biology
Target Names	MAPK13

Image



Western blot

All lanes: MAPK13 antibody at 2µg/ml

Lane 1: Hela whole cell lysate

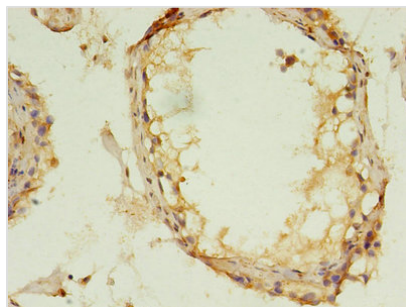
Lane 2: A549 whole cell lysate

Secondary

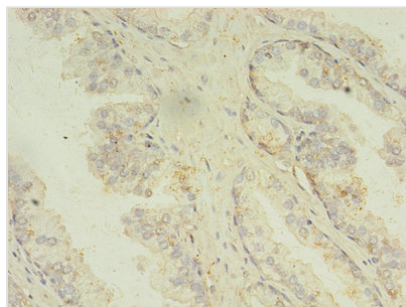
Goat polyclonal to rabbit IgG at 1/10000 dilution

Predicted band size: 43, 29 kDa

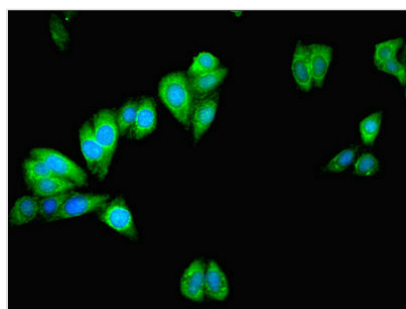
Observed band size: 43 kDa



Immunohistochemistry of paraffin-embedded human testis tissue using CSB-PA013452LA01HU at dilution of 1:100



Immunohistochemistry of paraffin-embedded human prostate cancer using CSB-PA013452LA01HU at dilution of 1:100



Immunofluorescent analysis of HepG2 cells using CSB-PA013452LA01HU at dilution of 1:100 and Alexa Fluor 488-conjugated AffiniPure Goat Anti-Rabbit IgG(H+L)

Usage

For Research Use Only. Not for use in diagnostic or therapeutic procedures.