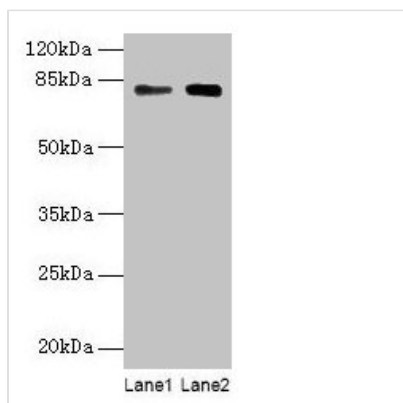




# MASP1 Antibody

<b>Product Code</b>	CSB-PA013508LA01HU
<b>Storage</b>	Upon receipt, store at -20°C or -80°C. Avoid repeated freeze.
<b>Uniprot No.</b>	P48740
<b>Immunogen</b>	Recombinant Human Mannan-binding lectin serine protease 1 protein (20-699AA)
<b>Raised In</b>	Rabbit
<b>Species Reactivity</b>	Human
<b>Tested Applications</b>	ELISA, WB; Recommended dilution: WB:1:500-1:2000
<b>Form</b>	Liquid
<b>Conjugate</b>	Non-conjugated
<b>Storage Buffer</b>	Preservative: 0.03% Proclin 300 Constituents: 50% Glycerol, 0.01M PBS, PH 7.4
<b>Purification Method</b>	>95%, Protein G purified
<b>Isotype</b>	IgG
<b>Clonality</b>	Polyclonal
<b>Alias</b>	Mannan-binding lectin serine protease 1 (EC 3.4.21.-) (Complement factor MASP-3) (Complement-activating component of Ra-reactive factor) (Mannose-binding lectin-associated serine protease 1) (MASP-1) (Mannose-binding protein-associated serine protease) (Ra-reactive factor serine protease p100) (RaRF) (Serine protease 5) [Cleaved into: Mannan-binding lectin serine protease 1 heavy chain; Mannan-binding lectin serine protease 1 light chain], MASP1, CRARF CRARF1 PRSS5
<b>Immunogen Species</b>	Homo sapiens (Human)
<b>Research Area</b>	Immunology
<b>Target Names</b>	MASP1

## Image



### Western blot

All lanes: MASP1 antibody at 6µg/ml

Lane 1: Hela whole cell lysate

Lane 2: U251 whole cell lysate

Secondary

Goat polyclonal to rabbit IgG at 1/10000 dilution

Predicted band size: 80, 82, 44, 69 kDa

Observed band size: 80 kDa

## Usage

For Research Use Only. Not for use in diagnostic or therapeutic procedures.