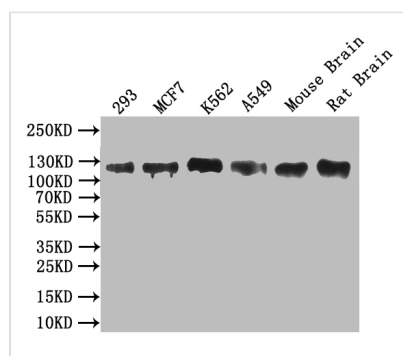




MCM9 Antibody

Product Code	CSB-PA882135LA01HU
Storage	Upon receipt, store at -20°C or -80°C. Avoid repeated freeze.
Uniprot No.	Q9NXL9
Immunogen	Recombinant Human DNA helicase MCM9 protein (1-391AA)
Raised In	Rabbit
Species Reactivity	Human, Mouse, Rat
Tested Applications	ELISA, WB, IF; Recommended dilution: WB:1:1000-1:5000, IF:1:20-1:200
Form	Liquid
Conjugate	Non-conjugated
Storage Buffer	Preservative: 0.02% sodium azide; Constituents: PBS containing 50% glycerol
Purification Method	Antigen affinity purification
Isotype	IgG
Clonality	Polyclonal
Product Type	Polyclonal Antibody
Immunogen Species	Homo sapiens (Human)
Research Area	Epigenetics and Nuclear Signaling
Target Names	MCM9

Image



Western Blot

Positive WB detected in: 293 whole cell lysate, MCF7 whole cell lysate, K562 whole cell lysate, A549 whole cell lysate, Mouse Brain tissue lysate, Mouse Brain tissue lysate

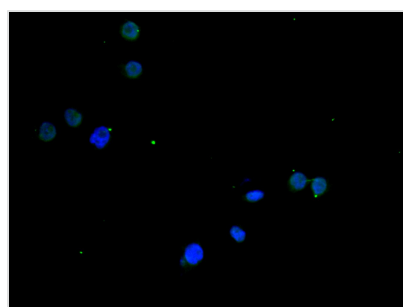
All lanes: MCM9 antibody at 1:1000

Secondary

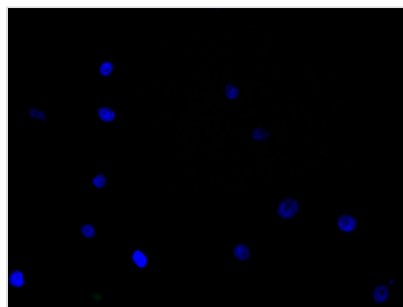
Goat polyclonal to rabbit IgG at 1/50000 dilution

Predicted band size: 127/85/72/48 kDa

Observed band size: 127 kDa



Immunofluorescence staining of MCF7 cell with CSB-PA882135LA01HU at 1:30, counter-stained with DAPI. The cells were fixed in 4% formaldehyde and blocked in 10% normal Goat Serum. The cells were then incubated with the antibody overnight at 4C. The secondary antibody was Alexa Fluor 488-conjugated AffiniPure Goat Anti-Rabbit IgG(H+L).



Immunofluorescence staining of MCF7 cell with 5% goat serum, counter-stained with DAPI. The cells were fixed in 4% formaldehyde and blocked in 10% normal Goat Serum. The cells were then incubated with the antibody overnight at 4C. The secondary antibody was Alexa Fluor 488-conjugated AffiniPure Goat Anti-Rabbit IgG(H+L).