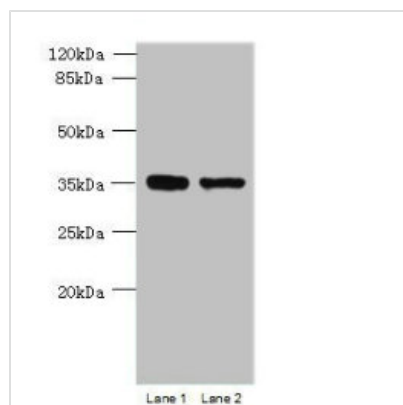




MGME1 Antibody

Product Code	CSB-PA880084LA01HU
Storage	Upon receipt, store at -20°C or -80°C. Avoid repeated freeze.
Uniprot No.	Q9BQP7
Immunogen	Recombinant Human Mitochondrial genome maintenance exonuclease 1 protein (81-260AA)
Raised In	Rabbit
Species Reactivity	Human
Tested Applications	ELISA, WB, IHC; Recommended dilution: WB:1:500-1:2000, IHC:1:20-1:200
Form	Liquid
Conjugate	Non-conjugated
Storage Buffer	Preservative: 0.03% Proclin 300 Constituents: 50% Glycerol, 0.01M PBS, PH 7.4
Purification Method	>95%, Protein G purified
Isotype	IgG
Clonality	Polyclonal
Alias	Mitochondrial genome maintenance exonuclease 1 (EC 3.1.-.-), MGME1, C20orf72 DDK1
Immunogen Species	Homo sapiens (Human)
Research Area	Others
Target Names	MGME1

Image



Western blot

All lanes: MGME1 antibody at 1µg/ml

Lane 1: Jurkat whole cell lysate

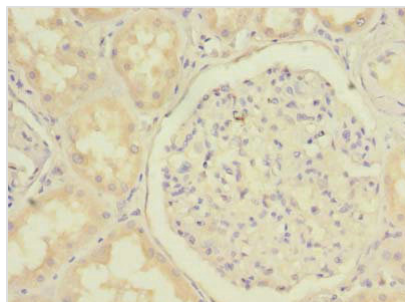
Lane 2: 293T whole cell lysate

Secondary

Goat polyclonal to rabbit IgG at 1/10000 dilution

Predicted band size: 39 kDa

Observed band size: 39 kDa



Immunohistochemistry of paraffin-embedded human kidney tissue using CSB-PA880084LA01HU at dilution of 1:100

Usage

For Research Use Only. Not for use in diagnostic or therapeutic procedures.