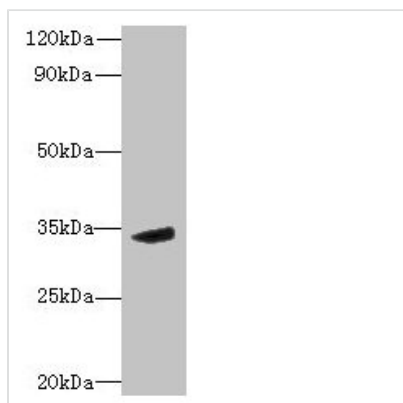




MPPED2 Antibody

Product Code	CSB-PA618997LA01HU
Storage	Upon receipt, store at -20°C or -80°C. Avoid repeated freeze.
Uniprot No.	Q15777
Immunogen	Recombinant Human Metallophosphoesterase MPPED2 protein (1-294AA)
Raised In	Rabbit
Species Reactivity	Human, Mouse
Tested Applications	ELISA, WB; Recommended dilution: WB:1:500-1:2000
Form	Liquid
Conjugate	Non-conjugated
Storage Buffer	Preservative: 0.03% Proclin 300 Constituents: 50% Glycerol, 0.01M PBS, PH 7.4
Purification Method	>95%, Protein G purified
Isotype	IgG
Clonality	Polyclonal
Alias	Metallophosphoesterase MPPED2 (EC 3.1.-.-) (Fetal brain protein 239) (239FB) (Metallophosphoesterase domain-containing protein 2), MPPED2, C11orf8 FAM1B
Immunogen Species	Homo sapiens (Human)
Research Area	Neuroscience
Target Names	MPPED2

Image



Western blot
All lanes: MPPED2 antibody at 6µg/ml + Mouse brain tissue
Secondary
Goat polyclonal to rabbit IgG at 1/10000 dilution
Predicted band size: 34, 32 kDa
Observed band size: 34 kDa

Usage

For Research Use Only. Not for use in diagnostic or therapeutic procedures.