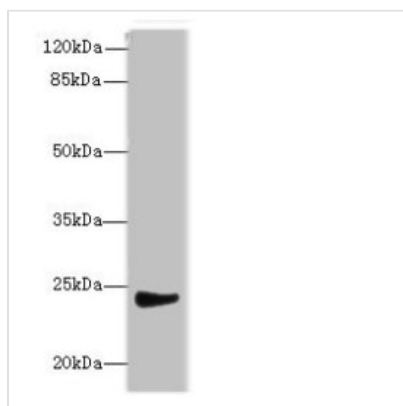




# MRPL22 Antibody

<b>Product Code</b>	CSB-PA878907LA01HU
<b>Storage</b>	Upon receipt, store at -20°C or -80°C. Avoid repeated freeze.
<b>Uniprot No.</b>	Q9NWU5
<b>Immunogen</b>	Recombinant Human 39S ribosomal protein L22, mitochondrial protein (41-206AA)
<b>Raised In</b>	Rabbit
<b>Species Reactivity</b>	Human
<b>Tested Applications</b>	ELISA, WB, IHC; Recommended dilution: WB:1:500-1:2000, IHC:1:20-1:200
<b>Form</b>	Liquid
<b>Conjugate</b>	Non-conjugated
<b>Storage Buffer</b>	Preservative: 0.03% Proclin 300 Constituents: 50% Glycerol, 0.01M PBS, PH 7.4
<b>Purification Method</b>	>95%, Protein G purified
<b>Isotype</b>	IgG
<b>Clonality</b>	Polyclonal
<b>Alias</b>	39S ribosomal protein L22, mitochondrial (L22mt) (MRP-L22) (39S ribosomal protein L25, mitochondrial) (L25mt) (MRP-L25) (Mitochondrial large ribosomal subunit protein uL22m), MRPL22, MRPL25 RPML25
<b>Immunogen Species</b>	Homo sapiens (Human)
<b>Research Area</b>	Tags & Cell Markers
<b>Target Names</b>	MRPL22

## Image



### Western blot

All lanes: MRPL22 antibody at 12µg/ml + SH-

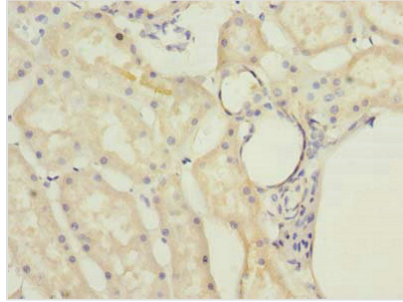
SY5Y whole cell lysate

Secondary

Goat polyclonal to rabbit IgG at 1/10000 dilution

Predicted band size: 24, 14, 15 kDa

Observed band size: 24 kDa



Immunohistochemistry of paraffin-embedded human kidney tissue using CSB-PA878907LA01HU at dilution of 1:100

---

**Usage**

For Research Use Only. Not for use in diagnostic or therapeutic procedures.