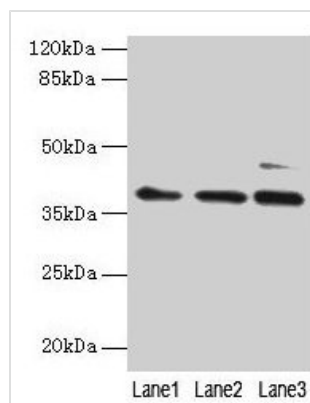




MRPL3 Antibody

Product Code	CSB-PA014836LA01HU
Storage	Upon receipt, store at -20°C or -80°C. Avoid repeated freeze.
Uniprot No.	P09001
Immunogen	Recombinant Human 39S ribosomal protein L3, mitochondrial protein (201-348AA)
Raised In	Rabbit
Species Reactivity	Human
Tested Applications	ELISA, WB, IHC; Recommended dilution: WB:1:500-1:2000, IHC:1:20-1:200
Form	Liquid
Conjugate	Non-conjugated
Storage Buffer	Preservative: 0.03% Proclin 300 Constituents: 50% Glycerol, 0.01M PBS, PH 7.4
Purification Method	>95%, Protein G purified
Isotype	IgG
Clonality	Polyclonal
Alias	39S ribosomal protein L3, mitochondrial (L3mt) (MRP-L3) (Mitochondrial large ribosomal subunit protein uL3m), MRPL3, MRL3 RPML3
Immunogen Species	Homo sapiens (Human)
Research Area	Epigenetics and Nuclear Signaling
Target Names	MRPL3

Image



Western blot

All lanes: MRPL3 antibody at 6µg/ml

Lane 1: Hela whole cell lysate

Lane 2: HepG2 whole cell lysate

Lane 3: A549 whole cell lysate

Secondary

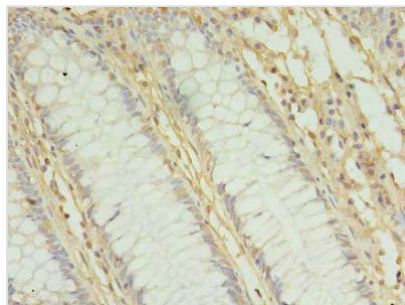
Goat polyclonal to rabbit IgG at 1/10000 dilution

Predicted band size: 39 kDa

Observed band size: 39 kDa



Immunohistochemistry of paraffin-embedded human liver cancer using CSB-PA014836LA01HU at dilution of 1:100



Immunohistochemistry of paraffin-embedded human colon cancer using CSB-PA014836LA01HU at dilution of 1:100