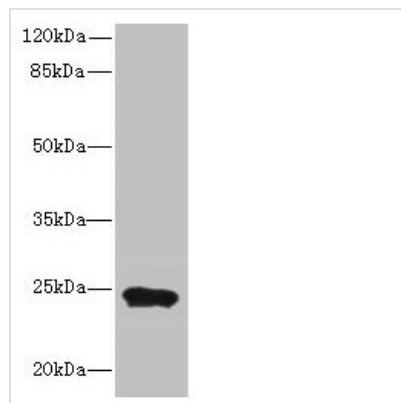




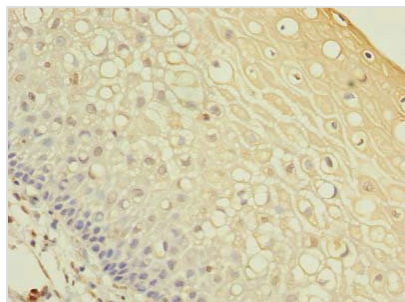
# MRPL48 Antibody

<b>Product Code</b>	CSB-PA836217LA01HU
<b>Storage</b>	Upon receipt, store at -20°C or -80°C. Avoid repeated freeze.
<b>Uniprot No.</b>	Q96GC5
<b>Immunogen</b>	Recombinant Human 39S ribosomal protein L48, mitochondrial protein (29-212AA)
<b>Raised In</b>	Rabbit
<b>Species Reactivity</b>	Human, Mouse
<b>Tested Applications</b>	ELISA, WB, IHC; Recommended dilution: WB:1:500-1:2000, IHC:1:20-1:200
<b>Form</b>	Liquid
<b>Conjugate</b>	Non-conjugated
<b>Storage Buffer</b>	Preservative: 0.03% Proclin 300 Constituents: 50% Glycerol, 0.01M PBS, PH 7.4
<b>Purification Method</b>	>95%, Protein G purified
<b>Isotype</b>	IgG
<b>Clonality</b>	Polyclonal
<b>Alias</b>	39S ribosomal protein L48, mitochondrial (L48mt) (MRP-L48) (Mitochondrial large ribosomal subunit protein mL48), MRPL48
<b>Immunogen Species</b>	Homo sapiens (Human)
<b>Research Area</b>	Epigenetics and Nuclear Signaling
<b>Target Names</b>	MRPL48

## Image



Western blot  
 All lanes: MRPL48 antibody at 8µg/ml + Mouse heart tissue  
 Secondary  
 Goat polyclonal to rabbit IgG at 1/10000 dilution  
 Predicted band size: 24, 22 kDa  
 Observed band size: 24 kDa



Immunohistochemistry of paraffin-embedded human cervical cancer using CSB-PA836217LA01HU at dilution of 1:100

---

**Usage**

For Research Use Only. Not for use in diagnostic or therapeutic procedures.