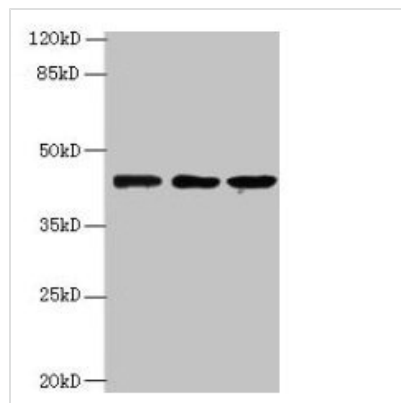




MRPS31 Antibody

Product Code	CSB-PA846089LA01HU
Storage	Upon receipt, store at -20°C or -80°C. Avoid repeated freeze.
Uniprot No.	Q92665
Immunogen	Recombinant Human 28S ribosomal protein S31, mitochondrial protein (66-395AA)
Raised In	Rabbit
Species Reactivity	Human
Tested Applications	ELISA, WB, IHC; Recommended dilution: WB:1:500-1:2000, IHC:1:20-1:200
Form	Liquid
Conjugate	Non-conjugated
Storage Buffer	Preservative: 0.03% Proclin 300 Constituents: 50% Glycerol, 0.01M PBS, PH 7.4
Purification Method	>95%, Protein G purified
Isotype	IgG
Clonality	Polyclonal
Alias	28S ribosomal protein S31, mitochondrial (MRP-S31) (S31mt) (Imogen 38) (Mitochondrial small ribosomal subunit protein mS31), MRPS31, IMO38
Immunogen Species	Homo sapiens (Human)
Research Area	Tags & Cell Markers
Target Names	MRPS31

Image



Western blot

All lanes: MRPS31 antibody at 8µg/ml

Lane 1: HeLa whole cell lysate

Lane 2: MCF-7 whole cell lysate

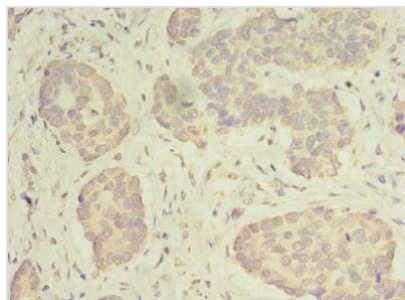
Lane 3: Jurkat whole cell lysate

Secondary

Goat polyclonal to rabbit IgG at 1/10000 dilution

Predicted band size: 46 kDa

Observed band size: 46 kDa



Immunohistochemistry of paraffin-embedded human gastric cancer using CSB-PA846089LA01HU at dilution of 1:100

Usage

For Research Use Only. Not for use in diagnostic or therapeutic procedures.