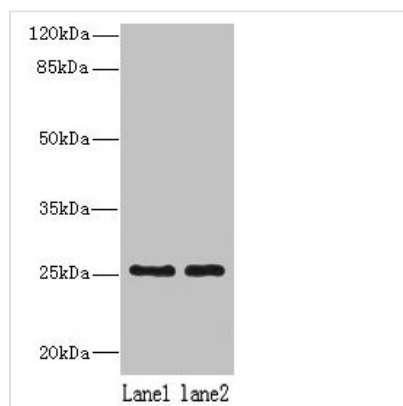




# NDFIP1 Antibody

<b>Product Code</b>	CSB-PA887119LA01HU
<b>Storage</b>	Upon receipt, store at -20°C or -80°C. Avoid repeated freeze.
<b>Uniprot No.</b>	Q9BT67
<b>Immunogen</b>	Recombinant Human NEDD4 family-interacting protein 1 protein (2-116AA)
<b>Raised In</b>	Rabbit
<b>Species Reactivity</b>	Human
<b>Tested Applications</b>	ELISA, WB, IHC, IF; Recommended dilution: WB:1:500-1:2000, IHC:1:20-1:200, IF:1:50-1:200
<b>Form</b>	Liquid
<b>Conjugate</b>	Non-conjugated
<b>Storage Buffer</b>	Preservative: 0.03% Proclin 300 Constituents: 50% Glycerol, 0.01M PBS, PH 7.4
<b>Purification Method</b>	>95%, Protein G purified
<b>Isotype</b>	IgG
<b>Clonality</b>	Polyclonal
<b>Alias</b>	NEDD4 family-interacting protein 1 (Breast cancer-associated protein SGA-1M) (NEDD4 WW domain-binding protein 5) (Putative MAPK-activating protein PM13) (Putative NF-kappa-B-activating protein 164) (Putative NFKB and MAPK-activating protein), NDFIP1, N4WBP5
<b>Immunogen Species</b>	Homo sapiens (Human)
<b>Research Area</b>	Cell Biology
<b>Target Names</b>	NDFIP1

## Image



### Western blot

All lanes: NDFIP1 antibody at 8µg/ml

Lane 1: 293T whole cell lysate

Lane 2: Hela whole cell lysate

Secondary

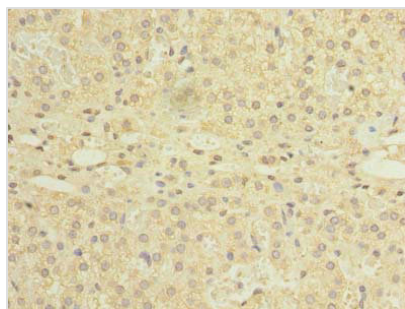
Goat polyclonal to rabbit IgG at 1/10000 dilution

Predicted band size: 25, 17 kDa

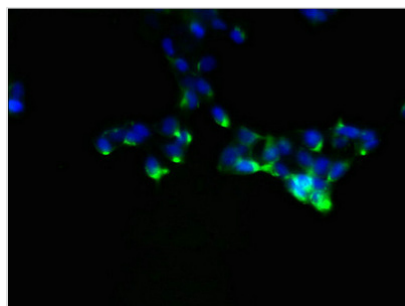
Observed band size: 25 kDa



Immunohistochemistry of paraffin-embedded human breast cancer using CSB-PA887119LA01HU at dilution of 1:100



Immunohistochemistry of paraffin-embedded human adrenal gland tissue using CSB-PA887119LA01HU at dilution of 1:100



Immunofluorescent analysis of 293 cells using CSB-PA887119LA01HU at dilution of 1:100 and Alexa Fluor 488-conjugated AffiniPure Goat Anti-Rabbit IgG(H+L)

**Usage**

For Research Use Only. Not for use in diagnostic or therapeutic procedures.