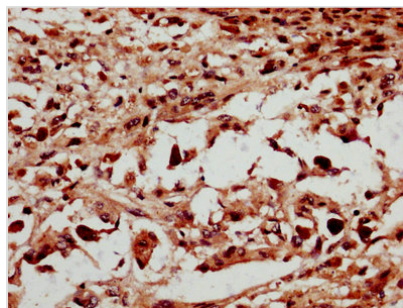




NSMCE2 Antibody

| | |
|----------------------------|---|
| Product Code | CSB-PA836260LA01HU |
| Storage | Upon receipt, store at -20°C or -80°C. Avoid repeated freeze. |
| Uniprot No. | Q96MF7 |
| Immunogen | Recombinant Human E3 SUMO-protein ligase NSE2 protein (1-247AA) |
| Raised In | Rabbit |
| Species Reactivity | Human |
| Tested Applications | ELISA, IHC; Recommended dilution: IHC:1:500-1:1000 |
| Form | Liquid |
| Conjugate | Non-conjugated |
| Storage Buffer | Preservative: 0.03% Proclin 300 Constituents: 50% Glycerol, 0.01M PBS, PH 7.4 |
| Purification Method | >95%, Protein G purified |
| Isotype | IgG |
| Clonality | Polyclonal |
| Alias | E3 SUMO-protein ligase NSE2 (EC 2.3.2.-) (E3 SUMO-protein transferase NSE2) (MMS21 homolog) (hMMS21) (Non-structural maintenance of chromosomes element 2 homolog) (Non-SMC element 2 homolog), NSMCE2, C8orf36 MMS21 |
| Immunogen Species | Homo sapiens (Human) |
| Research Area | Epigenetics and Nuclear Signaling |
| Target Names | NSMCE2 |

Image



IHC image of CSB-PA836260LA01HU diluted at 1:600 and staining in paraffin-embedded human melanoma performed on a Leica BondTM system. After dewaxing and hydration, antigen retrieval was mediated by high pressure in a citrate buffer (pH 6.0). Section was blocked with 10% normal goat serum 30min at RT. Then primary antibody (1% BSA) was incubated at 4°C overnight. The primary is detected by a biotinylated secondary antibody and visualized using an HRP conjugated SP system.