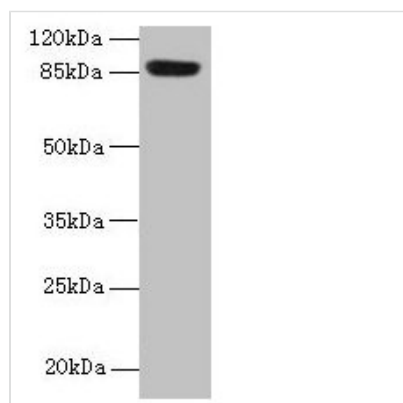




PASD1 Antibody

Product Code	CSB-PA816882LA01HU
Storage	Upon receipt, store at -20°C or -80°C. Avoid repeated freeze.
Uniprot No.	Q8IV76
Immunogen	Recombinant Human Circadian clock protein PASD1 protein (301-600AA)
Raised In	Rabbit
Species Reactivity	Human
Tested Applications	ELISA, WB; Recommended dilution: WB:1:500-1:2000
Form	Liquid
Conjugate	Non-conjugated
Storage Buffer	Preservative: 0.03% Proclin 300 Constituents: 50% Glycerol, 0.01M PBS, PH 7.4
Purification Method	>95%, Protein G purified
Isotype	IgG
Clonality	Polyclonal
Alias	Circadian clock protein PASD1 (Cancer/testis antigen 63) (CT63) (OX-TES-1) (PAS domain-containing protein 1), PASD1
Immunogen Species	Homo sapiens (Human)
Research Area	Epigenetics and Nuclear Signaling
Target Names	PASD1

Image



Western blot
 All lanes: PASD1 antibody at 4µg/ml + A549 whole cell lysate
 Secondary
 Goat polyclonal to rabbit IgG at 1/10000 dilution
 Predicted band size: 88, 73 kDa
 Observed band size: 88 kDa

Usage

For Research Use Only. Not for use in diagnostic or therapeutic procedures.