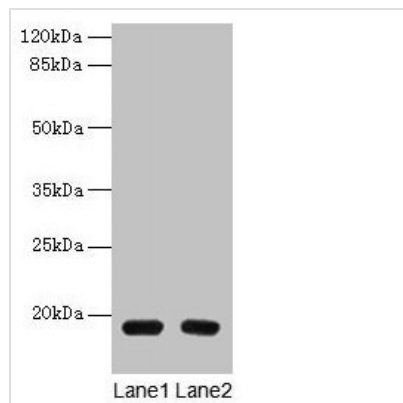




PDE6D Antibody

Product Code	CSB-PA526126LA01HU
Storage	Upon receipt, store at -20°C or -80°C. Avoid repeated freeze.
Uniprot No.	O43924
Immunogen	Recombinant Human Retinal rod rhodopsin-sensitive cGMP 3',5'-cyclic phosphodiesterase subunit delta protein (1-150AA)
Raised In	Rabbit
Species Reactivity	Human
Tested Applications	ELISA, WB, IHC; Recommended dilution: WB:1:500-1:2000, IHC:1:20-1:200
Form	Liquid
Conjugate	Non-conjugated
Storage Buffer	Preservative: 0.03% Proclin 300 Constituents: 50% Glycerol, 0.01M PBS, PH 7.4
Purification Method	Antigen Affinity Purified
Isotype	IgG
Clonality	Polyclonal
Alias	Retinal rod rhodopsin-sensitive cGMP 3',5'-cyclic phosphodiesterase subunit delta (GMP-PDE delta) (Protein p17), PDE6D, PDED
Immunogen Species	Homo sapiens (Human)
Research Area	Signal Transduction
Target Names	PDE6D

Image



Western blot

All lanes: PDE6D antibody at 1.5µg/ml

Lane 1: A549 whole cell lysate

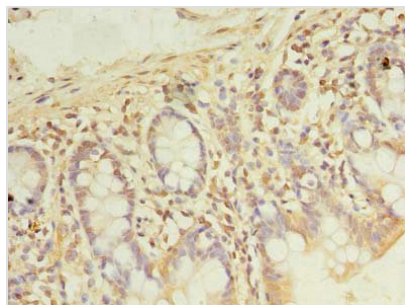
Lane 2: MCF-7 whole cell lysate

Secondary

Goat polyclonal to rabbit IgG at 1/10000 dilution

Predicted band size: 18 kDa

Observed band size: 18 kDa



Immunohistochemistry of paraffin-embedded human small intestine tissue using CSB-PA526126LA01HU at dilution of 1:100

Usage

For Research Use Only. Not for use in diagnostic or therapeutic procedures.