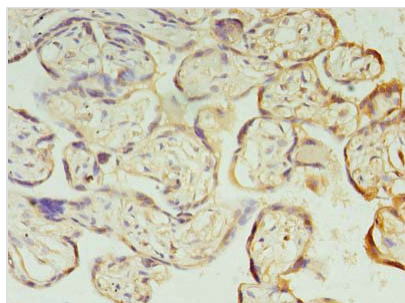




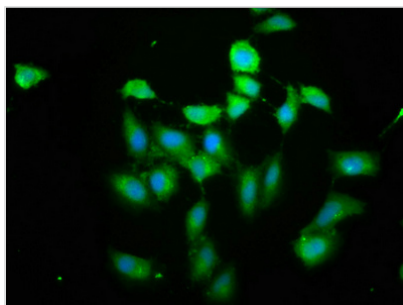
PIH1D1 Antibody

Product Code	CSB-PA889130LA01HU
Storage	Upon receipt, store at -20°C or -80°C. Avoid repeated freeze.
Uniprot No.	Q9NWS0
Immunogen	Recombinant Human PIH1 domain-containing protein 1 protein (1-290AA)
Raised In	Rabbit
Species Reactivity	Human
Tested Applications	ELISA, WB, IHC, IF, IP; Recommended dilution: WB:1:500-1:5000, IHC:1:20-1:200, IF:1:50-1:500, IP:1:200-1:2000
Form	Liquid
Conjugate	Non-conjugated
Storage Buffer	Preservative: 0.03% Proclin 300 Constituents: 50% Glycerol, 0.01M PBS, PH 7.4
Purification Method	>95%, Protein G purified
Isotype	IgG
Clonality	Polyclonal
Alias	NOP17 antibody; Nucleolar protein 17 homolog antibody; PIH1 domain containing 1 antibody; PIH1 domain containing protein 1 antibody; PIH1 domain-containing protein 1 antibody; PIH1D1 antibody; PIHD1_HUMAN antibody
Immunogen Species	Homo sapiens (Human)
Research Area	Others
Target Names	PIH1D1

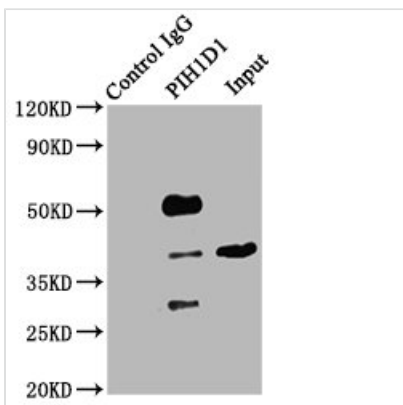
Image



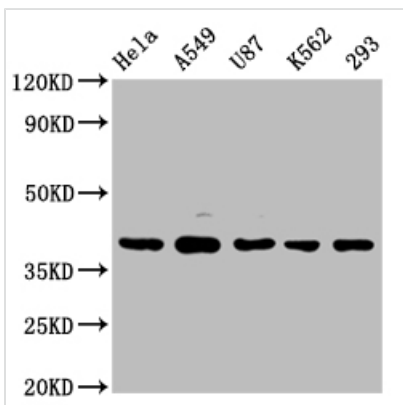
Immunohistochemistry of paraffin-embedded human placenta tissue using CSB-PA889130LA01HU at dilution of 1:100



Immunofluorescence staining of HeLa cells cells with CSB-PA889130LA01HU at 1: 200, counter-stained with DAPI. The cells were fixed in 4% formaldehyde, permeabilized tissue using 0.2% Triton X-100 and blocked in 10% normal Goat Serum. The cells were then incubated with the antibody overnight at 4°C. The secondary antibody was Alexa Fluor 488-conjugated AffiniPure Goat Anti-Rabbit IgG(H+L) .



Immunoprecipitating PIH1D1 in HeLa whole cell lysate
 Lane 1: Rabbit control IgG (1ug) instead of CSB-PA889130LA01HU in HeLa whole cell lysate. For western blotting, a HRP-conjugated Protein G antibody was used as the secondary antibody (1/2000)
 Lane 2: CSB-PA889130LA01HU (6ug) + HeLa whole cell lysate (500ug)
 Lane 3: HeLa whole cell lysate (10ug)



Western Blot
 Positive WB detected in: HeLa whole cell lysate, A549 whole cell lysate, U87 whole cell lysate, K562 whole cell lysate, 293 whole cell lysate
 All lanes: PIH1D1 antibody at 1:2000
 Secondary
 Goat polyclonal to rabbit IgG at 1/50000 dilution
 Predicted band size: 33, 20, 22 kDa
 Observed band size: 39 kDa

Usage

For Research Use Only. Not for use in diagnostic or therapeutic procedures.