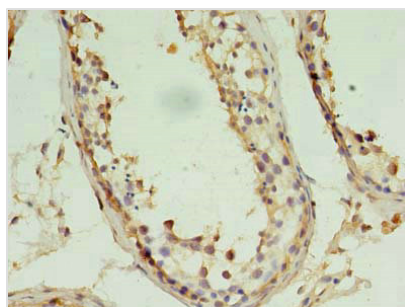




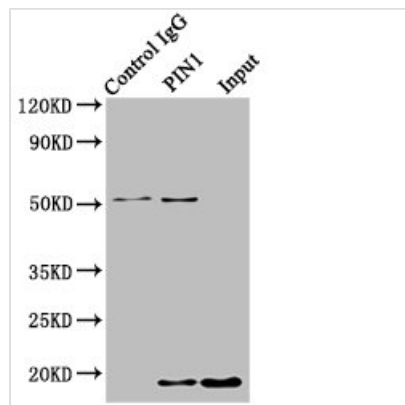
PIN1 Antibody

Product Code	CSB-PA04619A0Rb
Storage	Upon receipt, store at -20°C or -80°C. Avoid repeated freeze.
Uniprot No.	Q13526
Immunogen	Recombinant Human Peptidyl-prolyl cis-trans isomerase NIMA-interacting 1 protein (1-163AA)
Raised In	Rabbit
Species Reactivity	Human
Tested Applications	ELISA, IHC, IP; Recommended dilution: IHC:1:20-1:200, IP:1:200-1:2000
Form	Liquid
Conjugate	Non-conjugated
Storage Buffer	Preservative: 0.03% Proclin 300 Constituents: 50% Glycerol, 0.01M PBS, PH 7.4
Purification Method	>95%, Protein G purified
Isotype	IgG
Clonality	Polyclonal
Alias	Peptidyl-prolyl cis-trans isomerase NIMA-interacting 1 (EC 5.2.1.8) (Peptidyl-prolyl cis-trans isomerase Pin1) (PPIase Pin1) (Rotamase Pin1), PIN1
Immunogen Species	Homo sapiens (Human)
Research Area	Neuroscience
Target Names	PIN1

Image



Immunohistochemistry of paraffin-embedded human testis tissue using CSB-PA04619A0Rb at dilution of 1:100



Immunoprecipitating PIN1 in HepG2 whole cell lysate

Lane 1: Rabbit control IgG instead of CSB-PA04619A0Rb in HepG2 whole cell lysate. For western blotting, a HRP-conjugated Protein G antibody was used as the secondary antibody (1/2000)

Lane 2: CSB-PA04619A0Rb (8 μ g) + HepG2 whole cell lysate (500 μ g)

Lane 3: HepG2 whole cell lysate (10 μ g)

Usage

For Research Use Only. Not for use in diagnostic or therapeutic procedures.