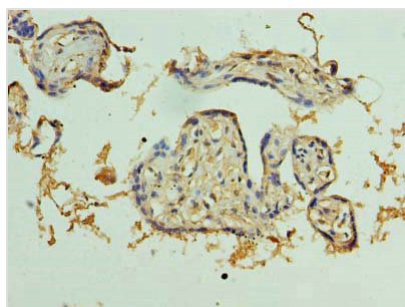




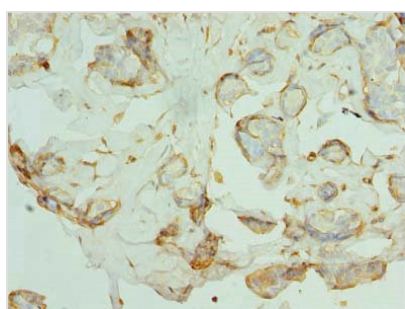
PKD1L2 Antibody

| | |
|----------------------------|--|
| Product Code | CSB-PA773589LA01HU |
| Storage | Upon receipt, store at -20°C or -80°C. Avoid repeated freeze. |
| Uniprot No. | Q7Z442 |
| Immunogen | Recombinant Human Polycystic kidney disease protein 1-like 2 protein (1-306AA) |
| Raised In | Rabbit |
| Species Reactivity | Human |
| Tested Applications | ELISA, IHC, IF; Recommended dilution: IHC:1:20-1:200, IF:1:50-1:200 |
| Form | Liquid |
| Conjugate | Non-conjugated |
| Storage Buffer | Preservative: 0.03% Proclin 300 Constituents: 50% Glycerol, 0.01M PBS, PH 7.4 |
| Purification Method | Antigen Affinity Purified |
| Isotype | IgG |
| Clonality | Polyclonal |
| Alias | Polycystic kidney disease protein 1-like 2 (PC1-like 2 protein) (Polycystin-1L2), PKD1L2, KIAA1879 PC1L2 |
| Immunogen Species | Homo sapiens (Human) |
| Research Area | Others |
| Target Names | PKD1L2 |

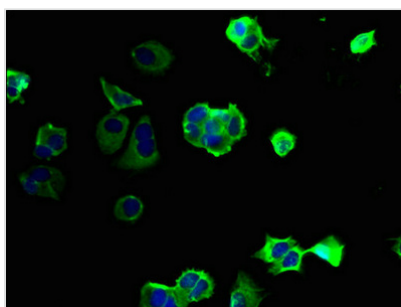
Image



Immunohistochemistry of paraffin-embedded human placenta tissue using CSB-PA773589LA01HU at dilution of 1:100



Immunohistochemistry of paraffin-embedded human breast cancer tissue using CSB-PA773589LA01HU at dilution of 1:100



Immunofluorescent analysis of MCF-7 cells using CSB-PA773589LA01HU at dilution of 1:100 and Alexa Fluor 488-conjugated AffiniPure Goat Anti-Rabbit IgG(H+L)