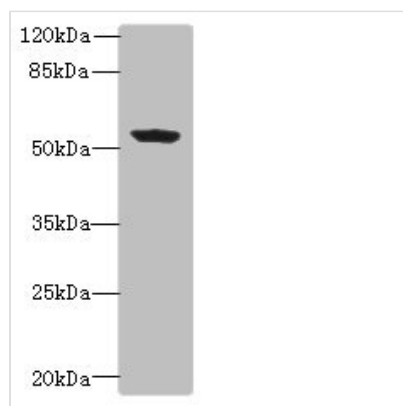




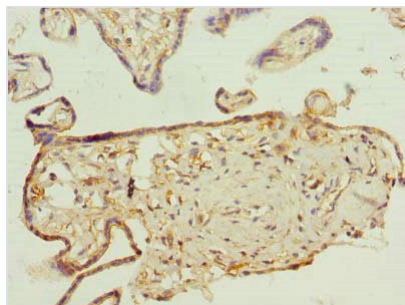
# PLEKHA8 Antibody

<b>Product Code</b>	CSB-PA856957LA01HU
<b>Storage</b>	Upon receipt, store at -20°C or -80°C. Avoid repeated freeze.
<b>Uniprot No.</b>	Q96JA3
<b>Immunogen</b>	Recombinant Human Pleckstrin homology domain-containing family A member 8 protein (1-300AA)
<b>Raised In</b>	Rabbit
<b>Species Reactivity</b>	Human, Mouse
<b>Tested Applications</b>	ELISA, WB, IHC; Recommended dilution: WB:1:500-1:2000, IHC:1:20-1:200
<b>Form</b>	Liquid
<b>Conjugate</b>	Non-conjugated
<b>Storage Buffer</b>	Preservative: 0.03% Proclin 300 Constituents: 50% Glycerol, 0.01M PBS, PH 7.4
<b>Purification Method</b>	Antigen Affinity Purified
<b>Isotype</b>	IgG
<b>Clonality</b>	Polyclonal
<b>Alias</b>	Pleckstrin homology domain-containing family A member 8 (PH domain-containing family A member 8) (Phosphatidylinositol-four-phosphate adapter protein 2) (FAPP-2) (Phosphoinositol 4-phosphate adapter protein 2) (hFAPP2) (Serologically defined breast cancer antigen NY-BR-86), PLEKHA8, FAPP2
<b>Immunogen Species</b>	Homo sapiens (Human)
<b>Research Area</b>	Signal Transduction
<b>Target Names</b>	PLEKHA8

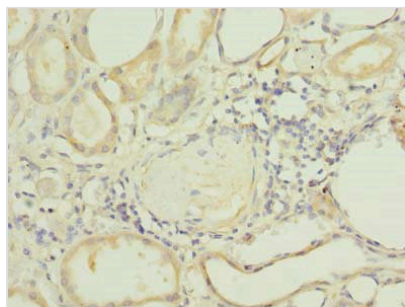
## Image



Western blot  
All lanes: PLEKHA8 antibody at 0.8μg/ml +  
Mouse brain tissue  
Secondary  
Goat polyclonal to rabbit IgG at 1/10000 dilution  
Predicted band size: 59, 52, 50 kDa  
Observed band size: 59 kDa



Immunohistochemistry of paraffin-embedded human placenta tissue using CSB-PA856957LA01HU at dilution of 1:100



Immunohistochemistry of paraffin-embedded human kidney tissue using CSB-PA856957LA01HU at dilution of 1:100