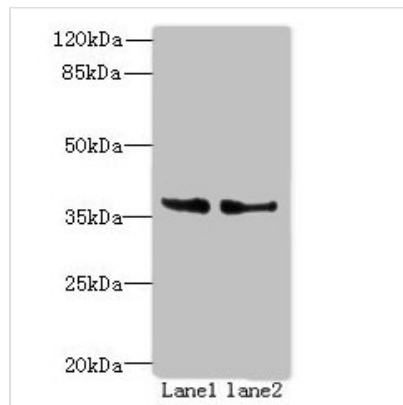




POLR3F Antibody

Product Code	CSB-PA884440LA01HU
Storage	Upon receipt, store at -20°C or -80°C. Avoid repeated freeze.
Uniprot No.	Q9H1D9
Immunogen	Recombinant Human DNA-directed RNA polymerase III subunit RPC6 protein (1-270AA)
Raised In	Rabbit
Species Reactivity	Human
Tested Applications	ELISA, WB; Recommended dilution: WB:1:500-1:2000
Form	Liquid
Conjugate	Non-conjugated
Storage Buffer	Preservative: 0.03% Proclin 300 Constituents: 50% Glycerol, 0.01M PBS, PH 7.4
Purification Method	>95%, Protein G purified
Isotype	IgG
Clonality	Polyclonal
Alias	DNA-directed RNA polymerase III subunit RPC6 (RNA polymerase III subunit C6) (DNA-directed RNA polymerase III subunit F) (RNA polymerase III 39 kDa subunit) (RPC39), POLR3F
Immunogen Species	Homo sapiens (Human)
Research Area	Epigenetics and Nuclear Signaling
Target Names	POLR3F

Image



Western blot

All lanes: POLR3F antibody at 8µg/ml

Lane 1: Hela whole cell lysate

Lane 2: HepG2 whole cell lysate

Secondary

Goat polyclonal to rabbit IgG at 1/10000 dilution

Predicted band size: 36 kDa

Observed band size: 36 kDa

Usage

For Research Use Only. Not for use in diagnostic or therapeutic procedures.