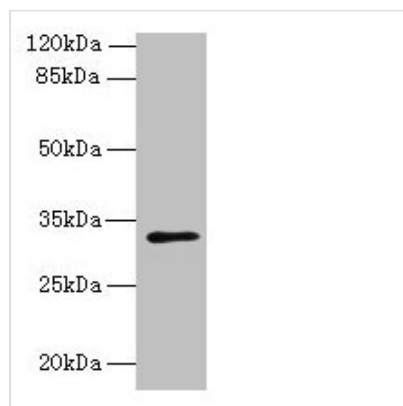




PLPP2 Antibody

Product Code	CSB-PA018416LA01HU
Storage	Upon receipt, store at -20°C or -80°C. Avoid repeated freeze.
Uniprot No.	O43688
Immunogen	Recombinant Human Phospholipid phosphatase 2 protein (109-162AA)
Raised In	Rabbit
Species Reactivity	Human
Tested Applications	ELISA, WB, IHC, IF; Recommended dilution: WB:1:500-1:2000, IHC:1:20-1:200, IF:1:50-1:200
Form	Liquid
Conjugate	Non-conjugated
Storage Buffer	Preservative: 0.03% Proclin 300 Constituents: 50% Glycerol, 0.01M PBS, PH 7.4
Purification Method	>95%, Protein G purified
Isotype	IgG
Clonality	Polyclonal
Alias	Phospholipid phosphatase 2 (EC 3.1.3.4) (Lipid phosphate phosphohydrolase 2) (PAP2-gamma) (PAP2-G) (Phosphatidate phosphohydrolase type 2c) (Phosphatidic acid phosphatase 2c) (PAP-2c) (PAP2c), PLPP2, LPP2 PPAP2C
Immunogen Species	Homo sapiens (Human)
Research Area	Signal Transduction
Target Names	PLPP2

Image



Western blot

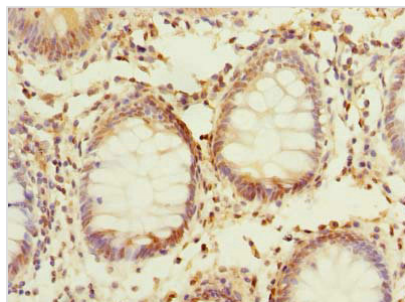
All lanes: PLPP2 antibody at 8µg/ml + MCF-7 whole cell lysate

Secondary

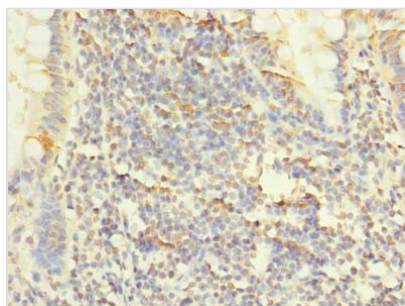
Goat polyclonal to rabbit IgG at 1/10000 dilution

Predicted band size: 33, 35, 27 kDa

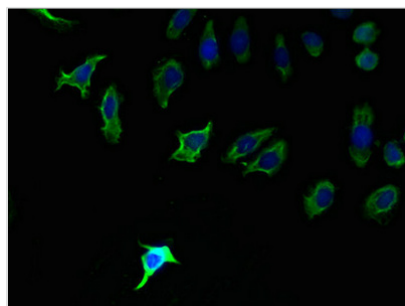
Observed band size: 33 kDa



Immunohistochemistry of paraffin-embedded human colon cancer using CSB-PA018416LA01HU at dilution of 1:100



Immunohistochemistry of paraffin-embedded human small intestine tissue using CSB-PA018416LA01HU at dilution of 1:100



Immunofluorescent analysis of A549 cells using CSB-PA018416LA01HU at dilution of 1:100 and Alexa Fluor 488-conjugated AffiniPure Goat Anti-Rabbit IgG(H+L)

Usage

For Research Use Only. Not for use in diagnostic or therapeutic procedures.