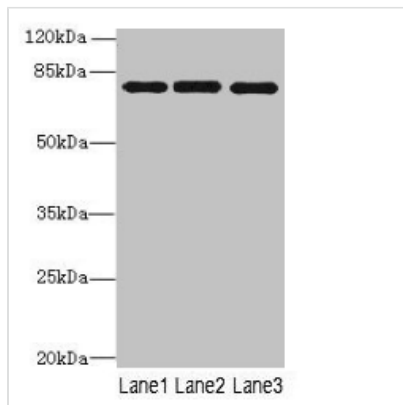




PPEF1 Antibody

Product Code	CSB-PA018435LA01HU
Storage	Upon receipt, store at -20°C or -80°C. Avoid repeated freeze.
Uniprot No.	O14829
Immunogen	Recombinant Human Serine/threonine-protein phosphatase with EF-hands 1 protein (301-500AA)
Raised In	Rabbit
Species Reactivity	Human, Mouse
Tested Applications	ELISA, WB, IHC; Recommended dilution: WB:1:500-1:2000, IHC:1:20-1:200
Form	Liquid
Conjugate	Non-conjugated
Storage Buffer	Preservative: 0.03% Proclin 300 Constituents: 50% Glycerol, 0.01M PBS, PH 7.4
Purification Method	Antigen Affinity Purified
Isotype	IgG
Clonality	Polyclonal
Alias	Serine/threonine-protein phosphatase with EF-hands 1 (PPEF-1) (EC 3.1.3.16) (Protein phosphatase with EF calcium-binding domain) (PPEF) (Serine/threonine-protein phosphatase 7) (PP7), PPEF1, PPEF PPP7C
Immunogen Species	Homo sapiens (Human)
Research Area	Signal Transduction
Target Names	PPEF1

Image



Western blot

All lanes: PPEF1 antibody at 1µg/ml

Lane 1: U251 whole cell lysate

Lane 2: A549 whole cell lysate

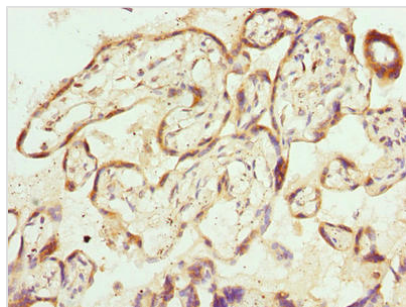
Lane 3: Mouse gonadal tissue

Secondary

Goat polyclonal to rabbit IgG at 1/10000 dilution

Predicted band size: 76, 70, 73, 45, 69 kDa

Observed band size: 76 kDa



Immunohistochemistry of paraffin-embedded human placenta tissue using CSB-PA018435LA01HU at dilution of 1:100

Usage

For Research Use Only. Not for use in diagnostic or therapeutic procedures.