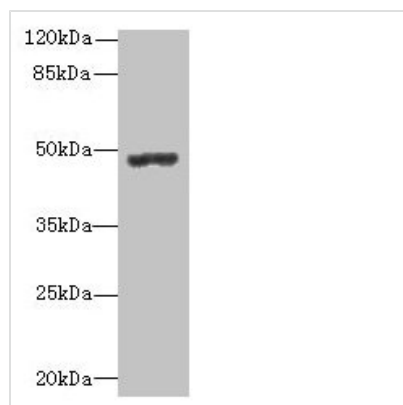




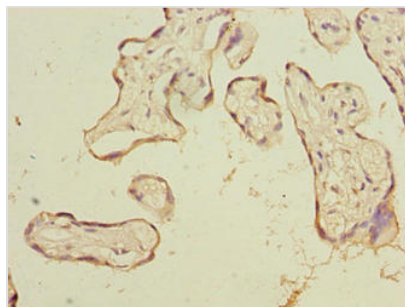
PSG3 Antibody

Product Code	CSB-PA618081LA01HU
Storage	Upon receipt, store at -20°C or -80°C. Avoid repeated freeze.
Uniprot No.	Q16557
Immunogen	Recombinant Human Pregnancy-specific beta-1-glycoprotein 3 protein (35-310AA)
Raised In	Rabbit
Species Reactivity	Human
Tested Applications	ELISA, WB, IHC; Recommended dilution: WB:1:500-1:2000, IHC:1:20-1:200
Form	Liquid
Conjugate	Non-conjugated
Storage Buffer	Preservative: 0.03% Proclin 300 Constituents: 50% Glycerol, 0.01M PBS, PH 7.4
Purification Method	>95%, Protein G purified
Isotype	IgG
Clonality	Polyclonal
Alias	Pregnancy-specific beta-1-glycoprotein 3 (PS-beta-G-3) (PSBG-3) (Pregnancy-specific glycoprotein 3) (Carcinoembryonic antigen SG5), PSG3
Immunogen Species	Homo sapiens (Human)
Research Area	Tags & Cell Markers
Target Names	PSG3

Image



Western blot
All lanes: PSG3 antibody at 10µg/ml + HepG2 whole cell lysate
Secondary
Goat polyclonal to rabbit IgG at 1/10000 dilution
Predicted band size: 48 kDa
Observed band size: 48 kDa



Immunohistochemistry of paraffin-embedded human placenta tissue using CSB-PA618081LA01HU at dilution of 1:100