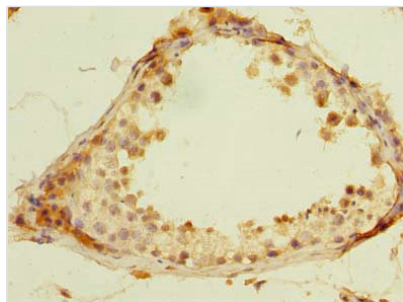




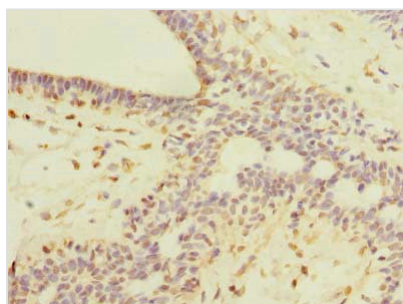
ROPN1L Antibody

Product Code	CSB-PA856908LA01HU
Storage	Upon receipt, store at -20°C or -80°C. Avoid repeated freeze.
Uniprot No.	Q96C74
Immunogen	Recombinant Human Ropporin-1-like protein (1-230AA)
Raised In	Rabbit
Species Reactivity	Human
Tested Applications	ELISA, IHC; Recommended dilution: IHC:1:20-1:200
Form	Liquid
Conjugate	Non-conjugated
Storage Buffer	Preservative: 0.03% Proclin 300 Constituents: 50% Glycerol, 0.01M PBS, PH 7.4
Purification Method	>95%, Protein G purified
Isotype	IgG
Clonality	Polyclonal
Alias	Ropporin-1-like protein (ROPN1-like protein) (AKAP-associated sperm protein), ROPN1L, ASP
Immunogen Species	Homo sapiens (Human)
Research Area	Cell Biology
Target Names	ROPN1L

Image



Immunohistochemistry of paraffin-embedded human testis tissue using CSB-PA856908LA01HU at dilution of 1:100



Immunohistochemistry of paraffin-embedded human breast cancer using CSB-PA856908LA01HU at dilution of 1:100



Usage

For Research Use Only. Not for use in diagnostic or therapeutic procedures.