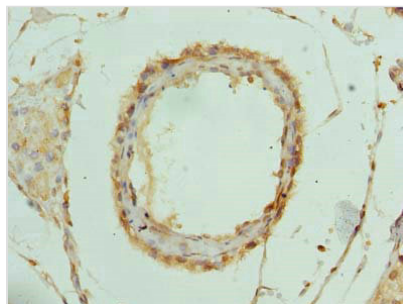




RPL39L Antibody

Product Code	CSB-PA850285LA01HU
Storage	Upon receipt, store at -20°C or -80°C. Avoid repeated freeze.
Uniprot No.	Q96EH5
Immunogen	Recombinant Human 60S ribosomal protein L39-like protein (1-51AA)
Raised In	Rabbit
Species Reactivity	Human
Tested Applications	ELISA, IHC; Recommended dilution: IHC:1:20-1:200
Form	Liquid
Conjugate	Non-conjugated
Storage Buffer	Preservative: 0.03% Proclin 300 Constituents: 50% Glycerol, 0.01M PBS, PH 7.4
Purification Method	>95%, Protein G purified
Isotype	IgG
Clonality	Polyclonal
Alias	60S ribosomal protein L39-like (60S ribosomal protein L39-2) (Large ribosomal subunit protein eL39-like), RPL39L, RPL39L1
Immunogen Species	Homo sapiens (Human)
Research Area	Others
Target Names	RPL39L

Image



Immunohistochemistry of paraffin-embedded human testis tissue using CSB-PA850285LA01HU at dilution of 1:100