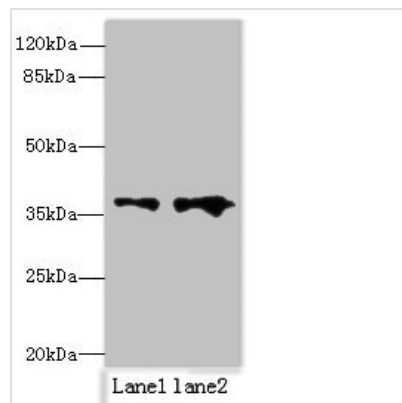




RPRD1B Antibody

| | |
|----------------------------|---|
| Product Code | CSB-PA878854HA01HU |
| Storage | Upon receipt, store at -20°C or -80°C. Avoid repeated freeze. |
| Uniprot No. | Q9NQG5 |
| Immunogen | Recombinant Human Regulation of nuclear pre-mRNA domain-containing protein 1B protein (2-172AA) |
| Raised In | Rabbit |
| Species Reactivity | Human |
| Tested Applications | ELISA, WB, IHC; Recommended dilution: WB:1:500-1:2000, IHC:1:20-1:200 |
| Form | Liquid |
| Conjugate | Non-conjugated |
| Storage Buffer | Preservative: 0.03% Proclin 300 Constituents: 50% Glycerol, 0.01M PBS, PH 7.4 |
| Purification Method | >95%, Protein G purified |
| Isotype | IgG |
| Clonality | Polyclonal |
| Alias | Regulation of nuclear pre-mRNA domain-containing protein 1B (Cell cycle-related and expression-elevated protein in tumor), RPRD1B, C20orf77 CREPT |
| Immunogen Species | Homo sapiens (Human) |
| Research Area | Cell Biology |
| Target Names | RPRD1B |

Image



Western blot

All lanes: RPRD1B antibody at 0.2µg/ml

Lane 1: Jurkat whole cell lysate

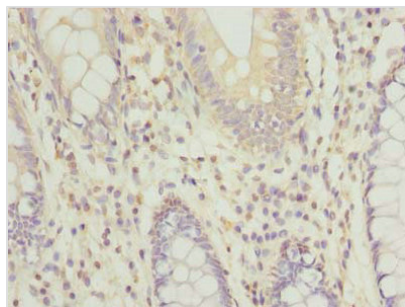
Lane 2: 293T whole cell lysate

Secondary

Goat polyclonal to rabbit IgG at 1/10000 dilution

Predicted band size: 37 kDa

Observed band size: 37 kDa



Immunohistochemistry of paraffin-embedded human colon cancer using CSB-PA878854HA01HU at dilution of 1:100

Usage

For Research Use Only. Not for use in diagnostic or therapeutic procedures.