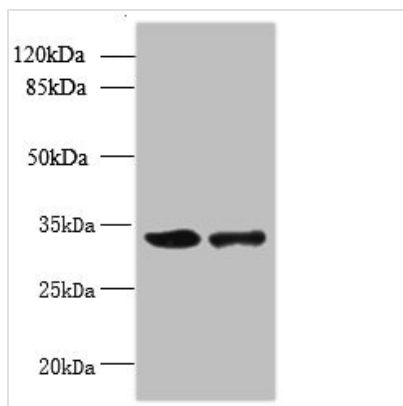




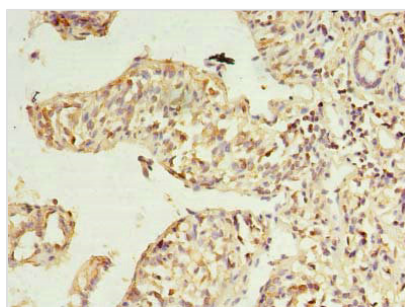
RWDD2A Antibody

Product Code	CSB-PA883450LA01HU
Storage	Upon receipt, store at -20°C or -80°C. Avoid repeated freeze.
Uniprot No.	Q9UIY3
Immunogen	Recombinant Human RWD domain-containing protein 2A protein (1-292AA)
Raised In	Rabbit
Species Reactivity	Human, Mouse
Tested Applications	ELISA, WB, IHC; Recommended dilution: WB:1:500-1:2000, IHC:1:20-1:200
Form	Liquid
Conjugate	Non-conjugated
Storage Buffer	Preservative: 0.03% Proclin 300 Constituents: 50% Glycerol, 0.01M PBS, PH 7.4
Purification Method	Antigen Affinity Purified
Isotype	IgG
Clonality	Polyclonal
Alias	RWD domain-containing protein 2A, RWDD2A, RWDD2
Immunogen Species	Homo sapiens (Human)
Research Area	Cell Biology
Target Names	RWDD2A

Image



Western blot
All lanes: RWDD2A antibody at 0.2µg/ml
Lane 1: Mouse thymus tissue
Lane 2: A549 whole cell lysate
Secondary
Goat polyclonal to rabbit IgG at 1/10000 dilution
Predicted band size: 34, 28 kDa
Observed band size: 34 kDa



Immunohistochemistry of paraffin-embedded human small intestine tissue using CSB-PA883450LA01HU at dilution of 1:100

