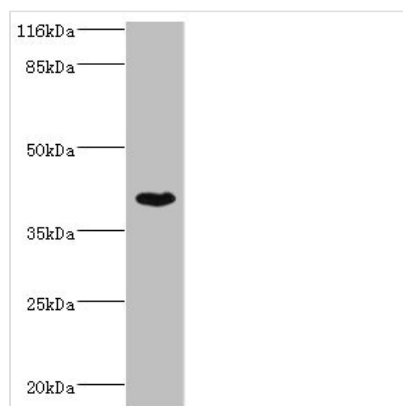




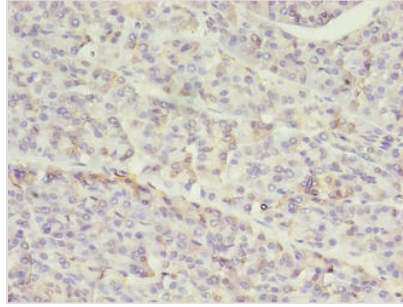
SETD7 Antibody

Product Code	CSB-PA840975LA01HU
Storage	Upon receipt, store at -20°C or -80°C. Avoid repeated freeze.
Uniprot No.	Q8WTS6
Immunogen	Recombinant Human Histone-lysine N-methyltransferase SETD7 protein (1-218AA)
Raised In	Rabbit
Species Reactivity	Human
Tested Applications	ELISA, WB, IHC; Recommended dilution: WB:1:500-1:2000, IHC:1:20-1:200
Form	Liquid
Conjugate	Non-conjugated
Storage Buffer	Preservative: 0.03% Proclin 300 Constituents: 50% Glycerol, 0.01M PBS, PH 7.4
Purification Method	>95%, Protein G purified
Isotype	IgG
Clonality	Polyclonal
Alias	Histone-lysine N-methyltransferase SETD7 (EC 2.1.1.43) (Histone H3-K4 methyltransferase SETD7) (H3-K4-HMTase SETD7) (Lysine N-methyltransferase 7) (SET domain-containing protein 7) (SET7/9), SETD7, KIAA1717 KMT7 SET7 SET9
Immunogen Species	Homo sapiens (Human)
Research Area	Epigenetics and Nuclear Signaling
Target Names	SETD7

Image



Western blot
 All lanes: SETD7 antibody at 4µg/ml + MCF-7 whole cell lysate
 Secondary
 Goat polyclonal to rabbit IgG at 1/10000 dilution
 Predicted band size: 41 kDa
 Observed band size: 41 kDa



Immunohistochemistry of paraffin-embedded human pancreatic tissue using CSB-PA840975LA01HU at dilution of 1:100

Usage

For Research Use Only. Not for use in diagnostic or therapeutic procedures.