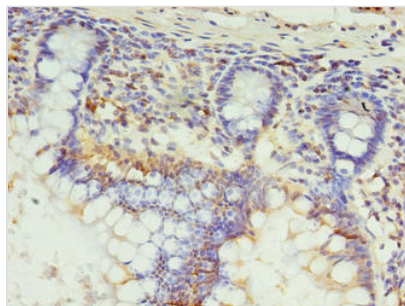




SETX Antibody

Product Code	CSB-PA800097LA01HU
Storage	Upon receipt, store at -20°C or -80°C. Avoid repeated freeze.
Uniprot No.	Q7Z333
Immunogen	Recombinant Human Probable helicase senataxin protein (2401-2677AA)
Raised In	Rabbit
Species Reactivity	Human
Tested Applications	ELISA, IHC; Recommended dilution: IHC:1:20-1:200
Form	Liquid
Conjugate	Non-conjugated
Storage Buffer	Preservative: 0.03% Proclin 300 Constituents: 50% Glycerol, 0.01M PBS, PH 7.4
Purification Method	>95%, Protein G purified
Isotype	IgG
Clonality	Polyclonal
Alias	Probable helicase senataxin (EC 3.6.4.-) (Amyotrophic lateral sclerosis 4 protein) (SEN1 homolog) (Senataxin), SETX, ALS4 KIAA0625 SCAR1
Immunogen Species	Homo sapiens (Human)
Research Area	Neuroscience
Target Names	SETX

Image



Immunohistochemistry of paraffin-embedded human small intestine tissue using CSB-PA800097LA01HU at dilution of 1:100

Usage

For Research Use Only. Not for use in diagnostic or therapeutic procedures.