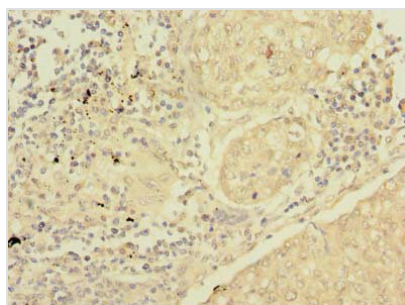




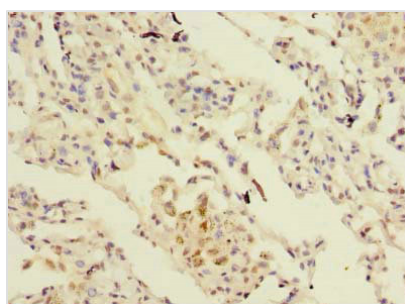
SFTPC Antibody

Product Code	CSB-PA021174LA01HU
Storage	Upon receipt, store at -20°C or -80°C. Avoid repeated freeze.
Uniprot No.	P11686
Immunogen	Recombinant Human Pulmonary surfactant-associated protein C protein (24-58AA)
Raised In	Rabbit
Species Reactivity	Human
Tested Applications	ELISA, IHC; Recommended dilution: IHC:1:20-1:200
Form	Liquid
Conjugate	Non-conjugated
Storage Buffer	Preservative: 0.03% Proclin 300 Constituents: 50% Glycerol, 0.01M PBS, PH 7.4
Purification Method	Antigen Affinity Purified
Isotype	IgG
Clonality	Polyclonal
Alias	Pulmonary surfactant-associated protein C (SP-C) (Pulmonary surfactant-associated proteolipid SPL(Val)) (SP5), SFTPC, SFTP2
Immunogen Species	Homo sapiens (Human)
Research Area	Cardiovascular
Target Names	SFTPC

Image



Immunohistochemistry of paraffin-embedded human lung cancer using CSB-PA021174LA01HU at dilution of 1:100



Immunohistochemistry of paraffin-embedded human lung tissue using CSB-PA021174LA01HU at dilution of 1:100



Usage

For Research Use Only. Not for use in diagnostic or therapeutic procedures.