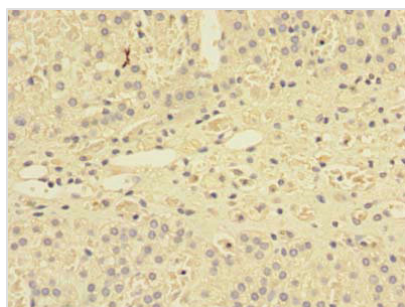




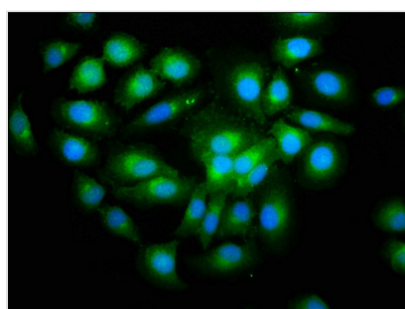
# SHISA5 Antibody

<b>Product Code</b>	CSB-PA818677LA01HU
<b>Storage</b>	Upon receipt, store at -20°C or -80°C. Avoid repeated freeze.
<b>Uniprot No.</b>	Q8N114
<b>Immunogen</b>	Recombinant Human Protein shisa-5 protein (56-137AA)
<b>Raised In</b>	Rabbit
<b>Species Reactivity</b>	Human
<b>Tested Applications</b>	ELISA, IHC, IF, IP; Recommended dilution: IHC:1:20-1:200, IF:1:50-1:500, IP:1:200-1:2000
<b>Form</b>	Liquid
<b>Conjugate</b>	Non-conjugated
<b>Storage Buffer</b>	Preservative: 0.03% Proclin 300 Constituents: 50% Glycerol, 0.01M PBS, PH 7.4
<b>Purification Method</b>	>95%, Protein G purified
<b>Isotype</b>	IgG
<b>Clonality</b>	Polyclonal
<b>Alias</b>	Protein shisa-5 (Putative NF-kappa-B-activating protein 120) (Scotin), SHISA5, SCOTIN
<b>Immunogen Species</b>	Homo sapiens (Human)
<b>Research Area</b>	Cell Biology
<b>Target Names</b>	SHISA5

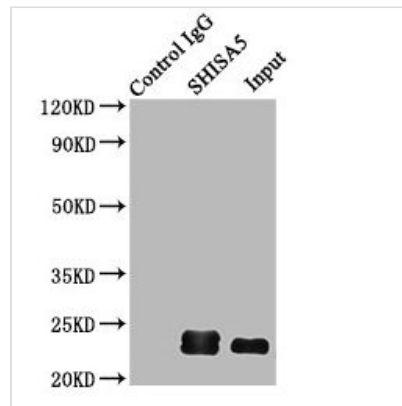
## Image



Immunohistochemistry of paraffin-embedded human adrenal gland tissue using CSB-PA818677LA01HU at dilution of 1:100



Immunofluorescence staining of A549 cells with CSB-PA818677LA01HU at 1:200, counter-stained with DAPI. The cells were fixed in 4% formaldehyde, permeabilized using 0.2% Triton X-100 and blocked in 10% normal Goat Serum. The cells were then incubated with the antibody overnight at 4°C. The secondary antibody was Alexa Fluor 488-conjugated AffiniPure Goat Anti-Rabbit IgG(H+L).



Immunoprecipitating SHISA5 in HepG2 whole cell lysate

Lane 1: Rabbit control IgG (1 $\mu$ g) instead of CSB-PA818677LA01HU in HepG2 whole cell lysate.

For western blotting, a HRP-conjugated Protein G antibody was used as the secondary antibody (1/2000)

Lane 2: CSB-PA818677LA01HU (6 $\mu$ g) + HepG2 whole cell lysate (500 $\mu$ g)

Lane 3: HepG2 whole cell lysate (10 $\mu$ g)

## Usage

For Research Use Only. Not for use in diagnostic or therapeutic procedures.