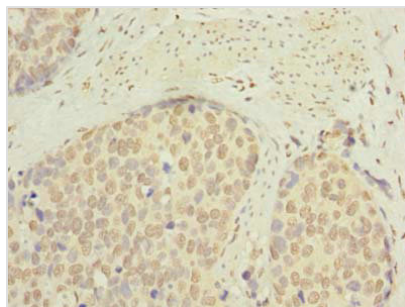




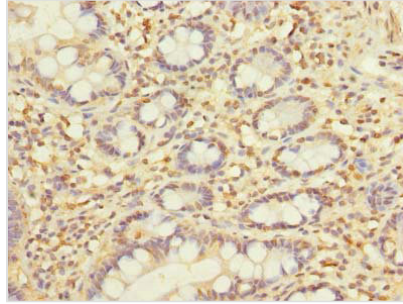
# SLC22A18AS Antibody

<b>Product Code</b>	CSB-PA847610LA01HU
<b>Storage</b>	Upon receipt, store at -20°C or -80°C. Avoid repeated freeze.
<b>Uniprot No.</b>	Q8N1D0
<b>Immunogen</b>	Recombinant Human Beckwith-Wiedemann syndrome chromosomal region 1 candidate gene B protein (1-150AA)
<b>Raised In</b>	Rabbit
<b>Species Reactivity</b>	Human
<b>Tested Applications</b>	ELISA, IHC; Recommended dilution: IHC:1:20-1:200
<b>Form</b>	Liquid
<b>Conjugate</b>	Non-conjugated
<b>Storage Buffer</b>	Preservative: 0.03% Proclin 300 Constituents: 50% Glycerol, 0.01M PBS, PH 7.4
<b>Purification Method</b>	>95%, Protein G purified
<b>Isotype</b>	IgG
<b>Clonality</b>	Polyclonal
<b>Alias</b>	Beckwith-Wiedemann syndrome chromosomal region 1 candidate gene B protein (Organic cation transporter-like protein 2 antisense protein) (Solute carrier family 22 member 1-like antisense protein) (Solute carrier family 22 member 18 antisense protein) (p27-Beckwith-Wiedemann region 1 B) (p27-BWR1B), SLC22A18AS, BWR1B BWSCR1B ORCTL2S SLC22A1LS
<b>Immunogen Species</b>	Homo sapiens (Human)
<b>Research Area</b>	Cell Biology
<b>Target Names</b>	SLC22A18AS

## Image



Immunohistochemistry of paraffin-embedded human gastric cancer using CSB-PA847610LA01HU at dilution of 1:100



Immunohistochemistry of paraffin-embedded human small intestine tissue using CSB-PA847610LA01HU at dilution of 1:100

---

**Usage**

For Research Use Only. Not for use in diagnostic or therapeutic procedures.