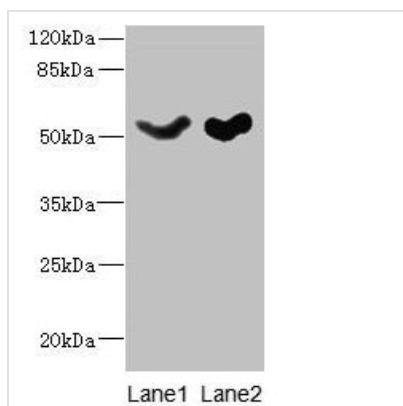




SLC25A25 Antibody

Product Code	CSB-PA760850LA01HU
Storage	Upon receipt, store at -20°C or -80°C. Avoid repeated freeze.
Uniprot No.	Q6KCM7
Immunogen	Recombinant Human Calcium-binding mitochondrial carrier protein SCaMC-2 protein (1-189AA)
Raised In	Rabbit
Species Reactivity	Human, Mouse
Tested Applications	ELISA, WB, IHC, IF; Recommended dilution: WB:1:500-1:2000, IHC:1:20-1:200, IF:1:50-1:200
Form	Liquid
Conjugate	Non-conjugated
Storage Buffer	Preservative: 0.03% Proclin 300 Constituents: 50% Glycerol, 0.01M PBS, PH 7.4
Purification Method	>95%, Protein G purified
Isotype	IgG
Clonality	Polyclonal
Alias	Calcium-binding mitochondrial carrier protein SCaMC-2 (Mitochondrial ATP-Mg/Pi carrier protein 3) (Mitochondrial Ca(2+)-dependent solute carrier protein 3) (Small calcium-binding mitochondrial carrier protein 2) (Solute carrier family 25 member 25), SLC25A25, APC3 KIAA1896 MCSC3 SCAMC2
Immunogen Species	Homo sapiens (Human)
Research Area	Signal Transduction
Target Names	SLC25A25

Image



Western blot

All lanes: SLC25A25 antibody at 10µg/ml

Lane 1: Mouse liver tissue

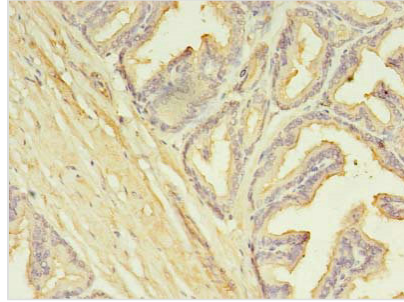
Lane 2: Mouse brain tissue

Secondary

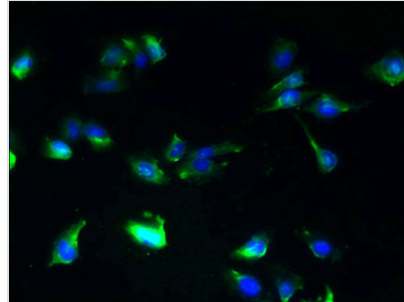
Goat polyclonal to rabbit IgG at 1/10000 dilution

Predicted band size: 53, 56, 57, 55, 41 kDa

Observed band size: 53 kDa



Immunohistochemistry of paraffin-embedded human prostate cancer using CSB-PA760850LA01HU at dilution of 1:100



Immunofluorescent analysis of U251 cells using CSB-PA760850LA01HU at dilution of 1:100 and Alexa Fluor 488-conjugated AffiniPure Goat Anti-Rabbit IgG(H+L)

Usage

For Research Use Only. Not for use in diagnostic or therapeutic procedures.