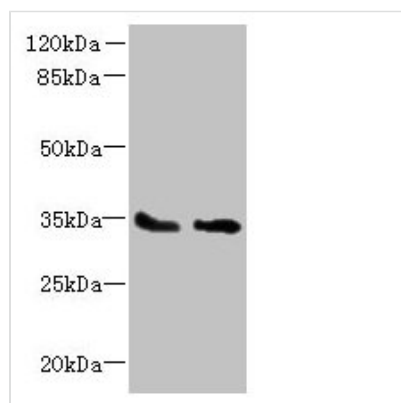




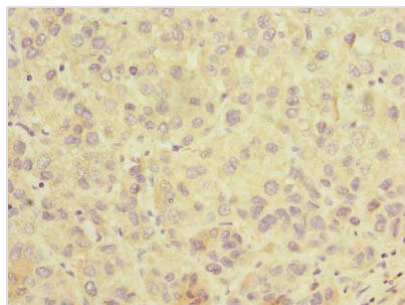
SLC25A36 Antibody

Product Code	CSB-PA853398LA01HU
Storage	Upon receipt, store at -20°C or -80°C. Avoid repeated freeze.
Uniprot No.	Q96CQ1
Immunogen	Recombinant Human Solute carrier family 25 member 36 protein (58-110AA)
Raised In	Rabbit
Species Reactivity	Human
Tested Applications	ELISA, WB, IHC, IF; Recommended dilution: WB:1:500-1:2000, IHC:1:20-1:200, IF:1:50-1:200
Form	Liquid
Conjugate	Non-conjugated
Storage Buffer	Preservative: 0.03% Proclin 300 Constituents: 50% Glycerol, 0.01M PBS, PH 7.4
Purification Method	>95%, Protein G purified
Isotype	IgG
Clonality	Polyclonal
Alias	Solute carrier family 25 member 36, SLC25A36
Immunogen Species	Homo sapiens (Human)
Research Area	Tags & Cell Markers
Target Names	SLC25A36

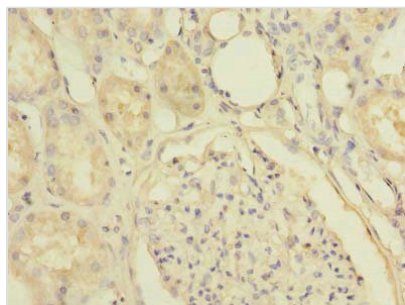
Image



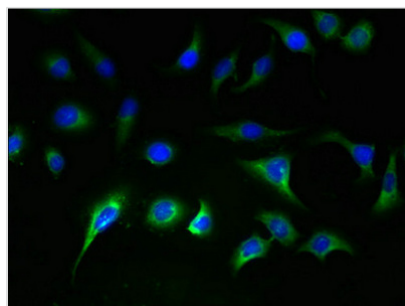
Western blot
 All lanes: SLC25A36 antibody at 4µg/ml
 Lane 1: A431 whole cell lysate
 Lane 2: A549 whole cell lysate
 Secondary
 Goat polyclonal to rabbit IgG at 1/10000 dilution
 Predicted band size: 35, 15, 18 kDa
 Observed band size: 35 kDa



Immunohistochemistry of paraffin-embedded human liver cancer using CSB-PA853398LA01HU at dilution of 1:100



Immunohistochemistry of paraffin-embedded human kidney tissue using CSB-PA853398LA01HU at dilution of 1:100



Immunofluorescent analysis of A549 cells using CSB-PA853398LA01HU at dilution of 1:100 and Alexa Fluor 488-conjugated AffiniPure Goat Anti-Rabbit IgG(H+L)

Usage

For Research Use Only. Not for use in diagnostic or therapeutic procedures.