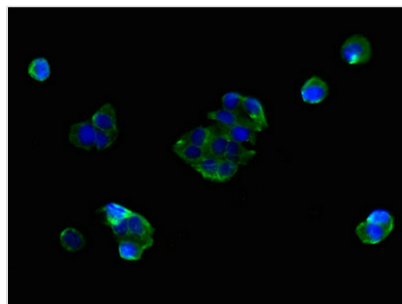




SLC25A38 Antibody

Product Code	CSB-PA846607LA01HU
Storage	Upon receipt, store at -20°C or -80°C. Avoid repeated freeze.
Uniprot No.	Q96DW6
Immunogen	Recombinant Human Mitochondrial glycine transporter protein (1-30AA)
Raised In	Rabbit
Species Reactivity	Human
Tested Applications	ELISA, IF; Recommended dilution: IF:1:50-1:200
Form	Liquid
Conjugate	Non-conjugated
Storage Buffer	Preservative: 0.03% Proclin 300 Constituents: 50% Glycerol, 0.01M PBS, PH 7.4
Purification Method	>95%, Protein G purified
Isotype	IgG
Clonality	Polyclonal
Alias	Mitochondrial glycine transporter (Mitochondrial glycine transporter GlyC) (Solute carrier family 25 member 38), SLC25A38
Immunogen Species	Homo sapiens (Human)
Research Area	Signal Transduction
Target Names	SLC25A38

Image



Immunofluorescent analysis of MCF-7 cells using CSB-PA846607LA01HU at dilution of 1:100 and Alexa Fluor 488-conjugated AffiniPure Goat Anti-Rabbit IgG(H+L)

Usage

For Research Use Only. Not for use in diagnostic or therapeutic procedures.