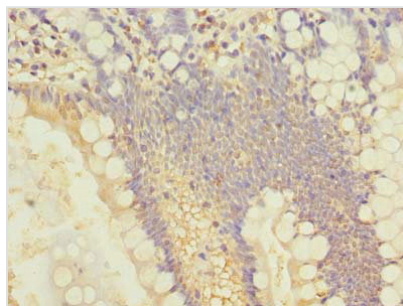




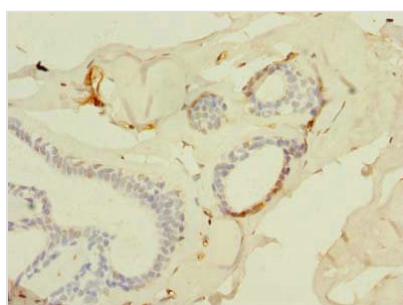
SLC25A4 Antibody

Product Code	CSB-PA021510LA01HU
Storage	Upon receipt, store at -20°C or -80°C. Avoid repeated freeze.
Uniprot No.	P12235
Immunogen	Recombinant Human ADP/ATP translocase 1 protein (40-74AA)
Raised In	Rabbit
Species Reactivity	Human
Tested Applications	ELISA, IHC, IF; Recommended dilution: IHC:1:20-1:200, IF:1:50-1:500
Form	Liquid
Conjugate	Non-conjugated
Storage Buffer	Preservative: 0.03% Proclin 300 Constituents: 50% Glycerol, 0.01M PBS, PH 7.4
Purification Method	>95%, Protein G purified
Isotype	IgG
Clonality	Polyclonal
Alias	ADP/ATP translocase 1 (ADP,ATP carrier protein 1) (ADP,ATP carrier protein, heart/skeletal muscle isoform T1) (Adenine nucleotide translocator 1) (ANT 1) (Solute carrier family 25 member 4), SLC25A4, ANT1
Immunogen Species	Homo sapiens (Human)
Research Area	Cell Biology
Target Names	SLC25A4

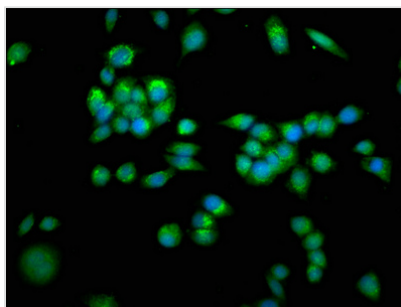
Image



Immunohistochemistry of paraffin-embedded human small intestine tissue using CSB-PA021510LA01HU at dilution of 1:100



Immunohistochemistry of paraffin-embedded human breast cancer tissue using CSB-PA021510LA01HU at dilution of 1:100



Immunofluorescence staining of PC-3 cells with CSB-PA021510LA01HU at 1:266, counter-stained with DAPI. The cells were fixed in 4% formaldehyde, permeabilized using 0.2% Triton X-100 and blocked in 10% normal Goat Serum. The cells were then incubated with the antibody overnight at 4°C. The secondary antibody was Alexa Fluor 488-conjugated AffiniPure Goat Anti-Rabbit IgG(H+L).