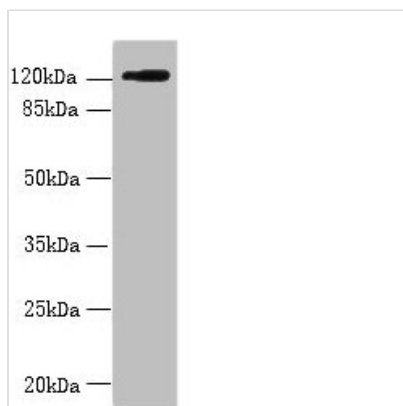




# SLC4A8 Antibody

<b>Product Code</b>	CSB-PA649721LA01HU
<b>Storage</b>	Upon receipt, store at -20°C or -80°C. Avoid repeated freeze.
<b>Uniprot No.</b>	Q2Y0W8
<b>Immunogen</b>	Recombinant Human Electroneutral sodium bicarbonate exchanger 1 protein (1-300AA)
<b>Raised In</b>	Rabbit
<b>Species Reactivity</b>	Human
<b>Tested Applications</b>	ELISA, WB, IHC, IF; Recommended dilution: WB:1:500-1:2000, IHC:1:20-1:200, IF:1:50-1:200
<b>Form</b>	Liquid
<b>Conjugate</b>	Non-conjugated
<b>Storage Buffer</b>	Preservative: 0.03% Proclin 300 Constituents: 50% Glycerol, 0.01M PBS, PH 7.4
<b>Purification Method</b>	Antigen Affinity Purified
<b>Isotype</b>	IgG
<b>Clonality</b>	Polyclonal
<b>Alias</b>	Electroneutral sodium bicarbonate exchanger 1 (Electroneutral Na(+)-driven Cl-HCO <sub>3</sub> exchanger) (Solute carrier family 4 member 8) (k-NBC3), SLC4A8, KIAA0739 NBC NBC3 NDCBE1
<b>Immunogen Species</b>	Homo sapiens (Human)
<b>Research Area</b>	Others
<b>Target Names</b>	SLC4A8

## Image



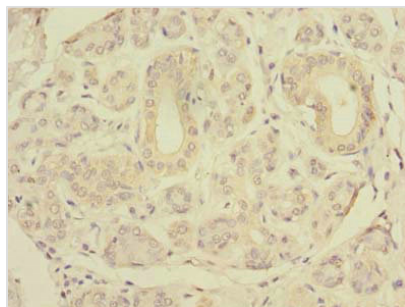
### Western blot

All lanes: SLC4A8 antibody at 2µg/ml + HeLa whole cell lysate

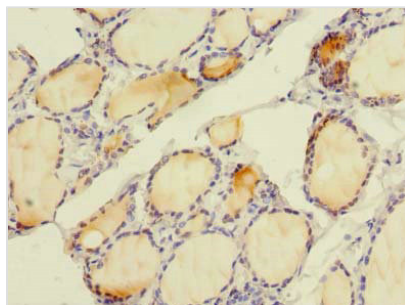
Secondary

Goat polyclonal to rabbit IgG at 1/10000 dilution  
Predicted band size: 123, 121, 118, 112, 78, 84, 72 kDa

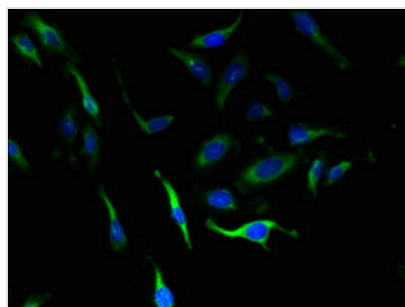
Observed band size: 123 kDa



Immunohistochemistry of paraffin-embedded human salivary gland tissue using CSB-PA649721LA01HU at dilution of 1:100



Immunohistochemistry of paraffin-embedded human thyroid tissue using CSB-PA649721LA01HU at dilution of 1:100



Immunofluorescent analysis of Hela cells using CSB-PA649721LA01HU at dilution of 1:100 and Alexa Fluor 488-conjugated AffiniPure Goat Anti-Rabbit IgG(H+L)

## Usage

For Research Use Only. Not for use in diagnostic or therapeutic procedures.