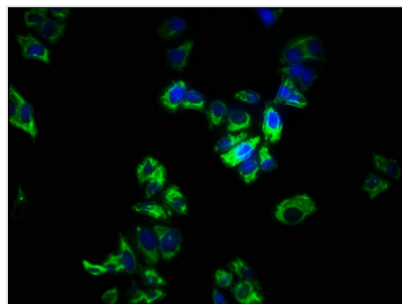




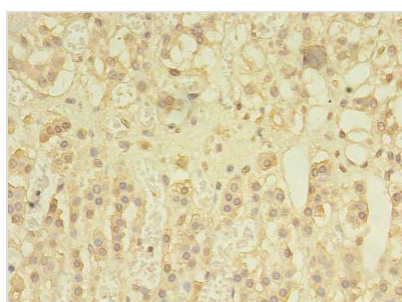
SPRY1 Antibody

Product Code	CSB-PA022621LA01HU
Storage	Upon receipt, store at -20°C or -80°C. Avoid repeated freeze.
Uniprot No.	O43609
Immunogen	Recombinant Human Protein sprouty homolog 1 protein (1-178AA)
Raised In	Rabbit
Species Reactivity	Human, Mouse
Tested Applications	ELISA, WB, IHC, IF; Recommended dilution: WB:1:500-1:5000, IHC:1:20-1:200, IF:1:200-1:500
Form	Liquid
Conjugate	Non-conjugated
Storage Buffer	Preservative: 0.03% Proclin 300 Constituents: 50% Glycerol, 0.01M PBS, PH 7.4
Purification Method	>95%, Protein G purified
Isotype	IgG
Clonality	Polyclonal
Alias	Protein sprouty homolog 1 (Spry-1), SPRY1
Immunogen Species	Homo sapiens (Human)
Research Area	Signal Transduction
Target Names	SPRY1

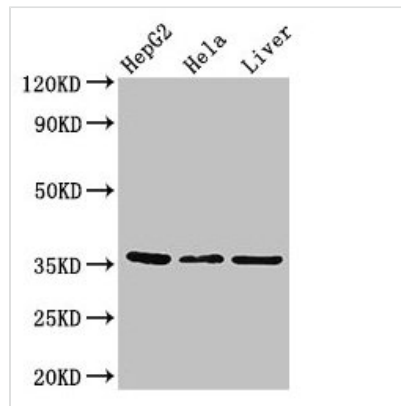
Image



Immunofluorescence staining of PC-3 cells with CSB-PA022621LA01HU at 1:266, counter-stained with DAPI. The cells were fixed in 4% formaldehyde, permeabilized using 0.2% Triton X-100 and blocked in 10% normal Goat Serum. The cells were then incubated with the antibody overnight at 4°C. The secondary antibody was Alexa Fluor 488-conjugated AffiniPure Goat Anti-Rabbit IgG(H+L).



Immunohistochemistry of paraffin-embedded human adrenal gland tissue using CSB-PA022621LA01HU at dilution of 1:100

**Western Blot**

Positive WB detected in: HepG2 whole cell lysate, HeLa whole cell lysate, Mouse liver tissue

All lanes: SPRY1 antibody at 2.7 μ g/ml

Secondary

Goat polyclonal to rabbit IgG at 1/50000 dilution

Predicted band size: 36 kDa

Observed band size: 36 kDa

Usage

For Research Use Only. Not for use in diagnostic or therapeutic procedures.