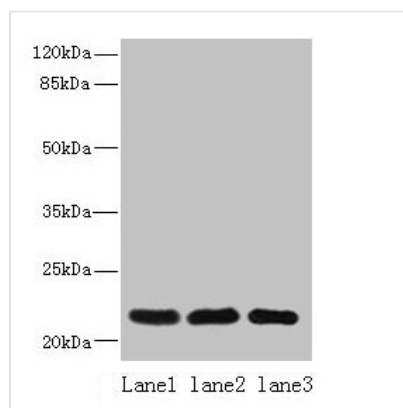




SSR3 Antibody

Product Code	CSB-PA892358LA01HU
Storage	Upon receipt, store at -20°C or -80°C. Avoid repeated freeze.
Uniprot No.	Q9UNL2
Immunogen	Recombinant Human Translocon-associated protein subunit gamma protein (77-135AA)
Raised In	Rabbit
Species Reactivity	Human
Tested Applications	ELISA, WB, IHC, IF; Recommended dilution: WB:1:500-1:2000, IHC:1:20-1:200, IF:1:50-1:200
Form	Liquid
Conjugate	Non-conjugated
Storage Buffer	Preservative: 0.03% Proclin 300 Constituents: 50% Glycerol, 0.01M PBS, PH 7.4
Purification Method	>95%, Protein G purified
Isotype	IgG
Clonality	Polyclonal
Alias	Translocon-associated protein subunit gamma (TRAP-gamma) (Signal sequence receptor subunit gamma) (SSR-gamma), SSR3, TRAPG
Immunogen Species	Homo sapiens (Human)
Research Area	Epigenetics and Nuclear Signaling
Target Names	SSR3

Image



Western blot

All lanes: SSR3 antibody at 10µg/ml

Lane 1: Hela whole cell lysate

Lane 2: U87 whole cell lysate

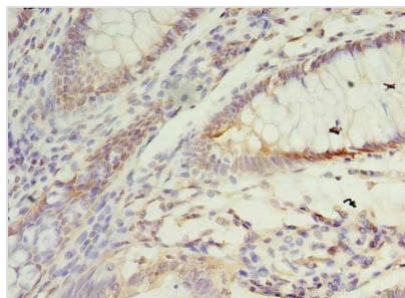
Lane 3: A431 whole cell lysate

Secondary

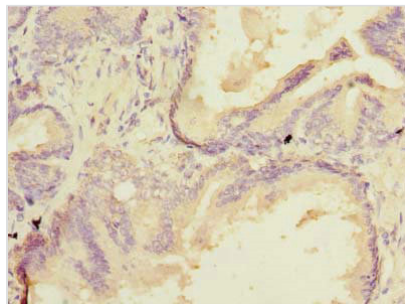
Goat polyclonal to rabbit IgG at 1/10000 dilution

Predicted band size: 22, 23 kDa

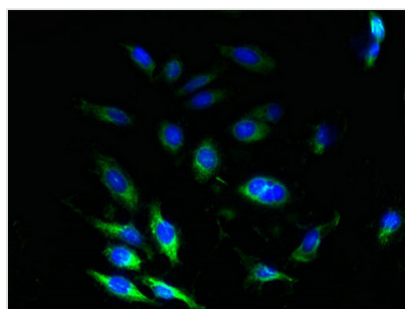
Observed band size: 22 kDa



Immunohistochemistry of paraffin-embedded human colon cancer using CSB-PA892358LA01HU at dilution of 1:100



Immunohistochemistry of paraffin-embedded human prostate cancer using CSB-PA892358LA01HU at dilution of 1:100



Immunofluorescent analysis of HeLa cells using CSB-PA892358LA01HU at dilution of 1:100 and Alexa Fluor 488-conjugated AffiniPure Goat Anti-Rabbit IgG(H+L)

Usage

For Research Use Only. Not for use in diagnostic or therapeutic procedures.