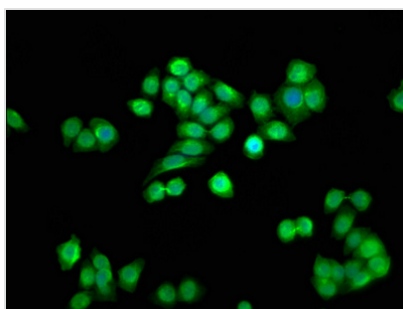




# SSU72 Antibody

<b>Product Code</b>	CSB-PA865091LA01HU
<b>Storage</b>	Upon receipt, store at -20°C or -80°C. Avoid repeated freeze.
<b>Uniprot No.</b>	Q9NP77
<b>Immunogen</b>	Recombinant Human RNA polymerase II subunit A C-terminal domain phosphatase SSU72 protein (1-194AA)
<b>Raised In</b>	Rabbit
<b>Species Reactivity</b>	Human
<b>Tested Applications</b>	ELISA, IF; Recommended dilution: IF:1:50-1:200
<b>Form</b>	Liquid
<b>Conjugate</b>	Non-conjugated
<b>Storage Buffer</b>	Preservative: 0.03% Proclin 300 Constituents: 50% Glycerol, 0.01M PBS, PH 7.4
<b>Purification Method</b>	>95%, Protein G purified
<b>Isotype</b>	IgG
<b>Clonality</b>	Polyclonal
<b>Alias</b>	RNA polymerase II subunit A C-terminal domain phosphatase SSU72 (CTD phosphatase SSU72) (EC 3.1.3.16), SSU72
<b>Immunogen Species</b>	Homo sapiens (Human)
<b>Research Area</b>	Epigenetics and Nuclear Signaling
<b>Target Names</b>	SSU72

## Image



Immunofluorescence staining of PC-3 cells with CSB-PA865091LA01HU at 1:33, counter-stained with DAPI. The cells were fixed in 4% formaldehyde, permeabilized using 0.2% Triton X-100 and blocked in 10% normal Goat Serum. The cells were then incubated with the antibody overnight at 4°C. The secondary antibody was Alexa Fluor 488-conjugated AffiniPure Goat Anti-Rabbit IgG(H+L).

## Usage

For Research Use Only. Not for use in diagnostic or therapeutic procedures.