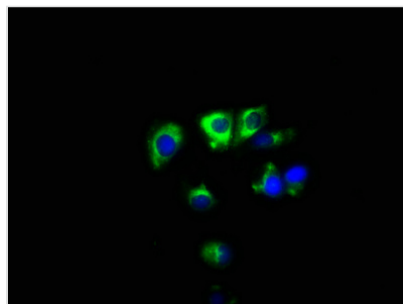




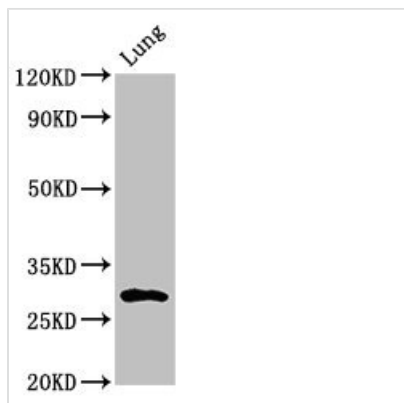
SYNPR Antibody

Product Code	CSB-PA023023LA01HU
Storage	Upon receipt, store at -20°C or -80°C. Avoid repeated freeze.
Uniprot No.	Q8TBG9
Immunogen	Recombinant Human Synaptoporin protein (199-265AA)
Raised In	Rabbit
Species Reactivity	Human, Rat
Tested Applications	ELISA, WB, IHC, IF; Recommended dilution: WB:1:500-1:5000, IHC:1:20-1:200, IF:1:50-1:200
Form	Liquid
Conjugate	Non-conjugated
Storage Buffer	Preservative: 0.03% Proclin 300 Constituents: 50% Glycerol, 0.01M PBS, PH 7.4
Purification Method	>95%, Protein G purified
Isotype	IgG
Clonality	Polyclonal
Alias	Synaptoporin, SYNPR
Immunogen Species	Homo sapiens (Human)
Research Area	Neuroscience
Target Names	SYNPR

Image



Immunofluorescence staining of MCF-7 cells with CSB-PA023023LA01HU at 1:100, counter-stained with DAPI. The cells were fixed in 4% formaldehyde, permeabilized using 0.2% Triton X-100 and blocked in 10% normal Goat Serum. The cells were then incubated with the antibody overnight at 4°C. The secondary antibody was Alexa Fluor 488-conjugated AffiniPure Goat Anti-Rabbit IgG(H+L).

**Western Blot**

Positive WB detected in: Rat lung tissue

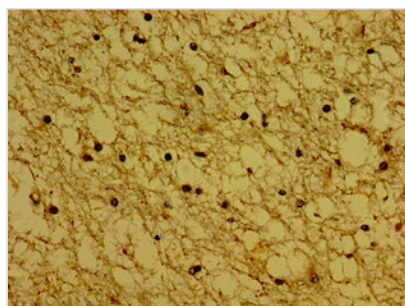
All lanes: SYNPR antibody at 3µg/ml

Secondary

Goat polyclonal to rabbit IgG at 1/50000 dilution

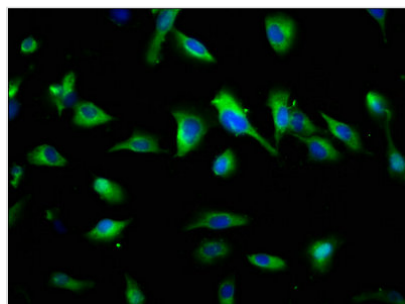
Predicted band size: 30, 32 kDa

Observed band size: 30 kDa

**Immunohistochemistry of paraffin-embedded**

human brain tissue using CSB-

PA023023LA01HU at dilution of 1:100

**Immunofluorescence staining of U251 cells with**

CSB-PA023023LA01HU at 1:145, counter-

stained with DAPI. The cells were fixed in 4%

formaldehyde, permeabilized using 0.2% Triton

X-100 and blocked in 10% normal Goat Serum.

The cells were then incubated with the antibody

overnight at 4°C. The secondary antibody was

Alexa Fluor 488-conjugated AffiniPure Goat

Anti-Rabbit IgG(H+L).

Usage

For Research Use Only. Not for use in diagnostic or therapeutic procedures.