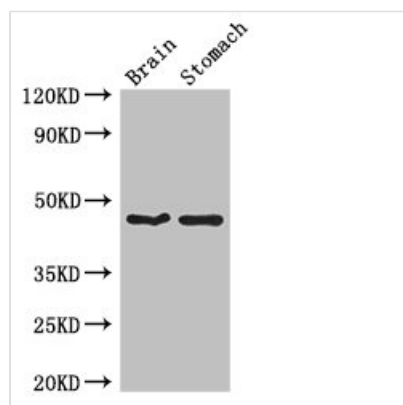




# TBC1D20 Antibody

<b>Product Code</b>	CSB-PA846594LA01HU
<b>Storage</b>	Upon receipt, store at -20°C or -80°C. Avoid repeated freeze.
<b>Uniprot No.</b>	Q96BZ9
<b>Immunogen</b>	Recombinant Human TBC1 domain family member 20 protein (1-237AA)
<b>Raised In</b>	Rabbit
<b>Species Reactivity</b>	Human, Mouse
<b>Tested Applications</b>	ELISA, WB, IHC, IF; Recommended dilution: WB:1:500-1:5000, IHC:1:20-1:200, IF:1:50-1:200
<b>Form</b>	Liquid
<b>Conjugate</b>	Non-conjugated
<b>Storage Buffer</b>	Preservative: 0.03% Proclin 300 Constituents: 50% Glycerol, 0.01M PBS, PH 7.4
<b>Purification Method</b>	>95%, Protein G purified
<b>Isotype</b>	IgG
<b>Clonality</b>	Polyclonal
<b>Alias</b>	TBC1 domain family member 20, TBC1D20, C20orf140
<b>Immunogen Species</b>	Homo sapiens (Human)
<b>Research Area</b>	Microbiology
<b>Target Names</b>	TBC1D20

## Image



### Western Blot

Positive WB detected in: Mouse brain tissue, Mouse stomach tissue

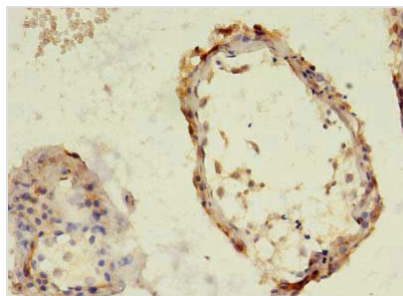
All lanes: TBC1D20 antibody at 4μg/ml

Secondary

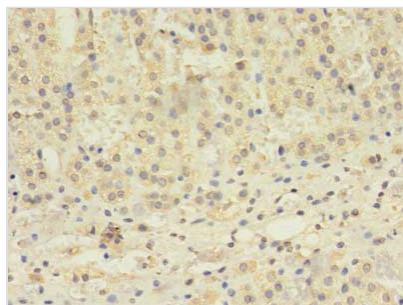
Goat polyclonal to rabbit IgG at 1/50000 dilution

Predicted band size: 46, 20, 49 kDa

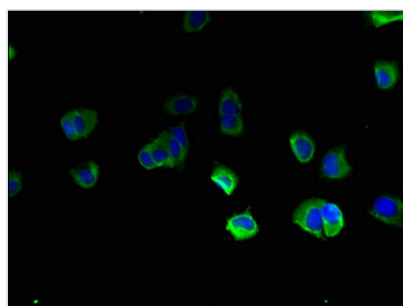
Observed band size: 46 kDa



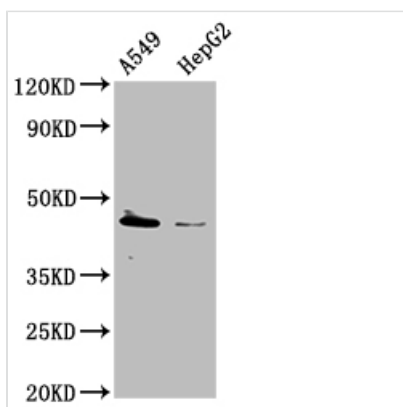
Immunohistochemistry of paraffin-embedded human testis tissue using CSB-PA846594LA01HU at dilution of 1:100



Immunohistochemistry of paraffin-embedded human adrenal gland tissue using CSB-PA846594LA01HU at dilution of 1:100



Immunofluorescent analysis of MCF-7 cells using CSB-PA846594LA01HU at dilution of 1:100 and Alexa Fluor 488-conjugated AffiniPure Goat Anti-Rabbit IgG(H+L)



Western Blot  
Positive WB detected in: A549 whole cell lysate, HepG2 whole cell lysate  
All lanes: TBC1D20 antibody at 1:2000  
Secondary  
Goat polyclonal to rabbit IgG at 1/50000 dilution  
Predicted band size: 46, 20, 49 kDa  
Observed band size: 46 kDa